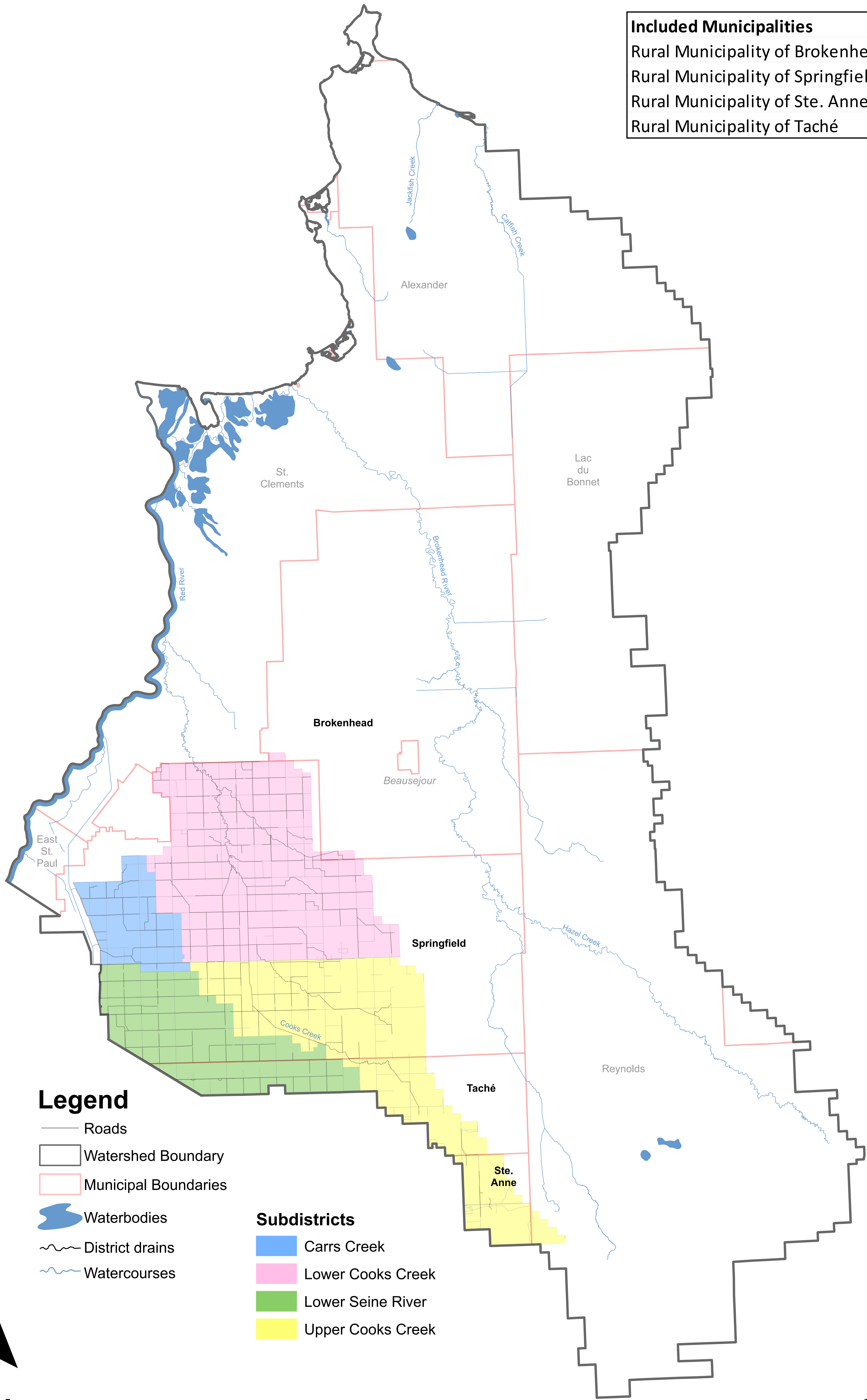


RGE 3E1 RGE 4E1 RGE 5E1 RGE 6E1 RGE 7E1 RGE 8E1 RGE 9E1 RGE 10E1 RGE 11E1 RGE 12E1 RGE 13E1

TWP 20
TWP 19
TWP 18
TWP 17
TWP 16
TWP 15
TWP 14
TWP 13
TWP 12
TWP 11
TWP 10
TWP 9
TWP 8
TWP 7
TWP 6

Included Municipalities
Rural Municipality of Brokenhead
Rural Municipality of Springfield
Rural Municipality of Ste. Anne
Rural Municipality of Taché

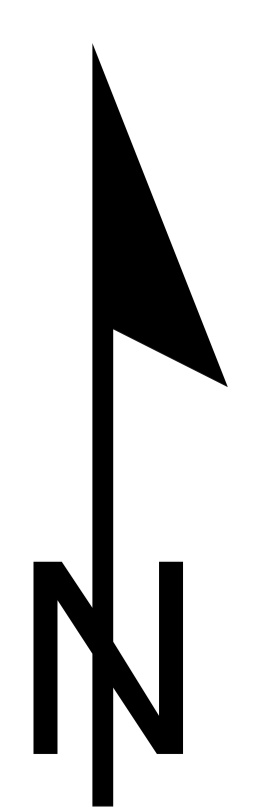


Legend

- Roads
- ▭ Watershed Boundary
- ▭ Municipal Boundaries
- Waterbodies
- ~ District drains
- ~ Watercourses

Subdistricts

- Carrs Creek
- Lower Cooks Creek
- Lower Seine River
- Upper Cooks Creek



0 5 10 20 30 40 km 1:132,000



NORTHEAST RED WATERSHED DISTRICT