



**Manitoba Electoral Divisions**  
BOUNDARIES COMMISSION

# Final Report 2018



## Commission Members

**Richard Chartier**

Chairperson

Chief Justice of Manitoba

**David Barnard**

President and Vice-Chancellor

University of Manitoba

**Steven Robinson**

Interim President and Vice-Chancellor

Brandon University

**Harvey Briggs**

Dean, Faculty of Arts, Business and Science

University College of the North

**Shipra Verma**

Chief Electoral Officer of Manitoba

## **CONTACT US:**

120-200 Vaughan Street  
Winnipeg, Manitoba Canada  
R3C 1T5

Phone: **204.945.3225**

Toll-free: **1.866.628.6837**

Email: **[info@boundariescommission.mb.ca](mailto:info@boundariescommission.mb.ca)**

Web: **[www.boundariescommission.mb.ca](http://www.boundariescommission.mb.ca)**

---

# Final Report

2018 Electoral Divisions Boundaries Commission



Winnipeg, Manitoba  
December 2018







**Manitoba Electoral Divisions**  
BOUNDARIES COMMISSION

**Commission Manitobaine**  
DE LA DIVISION ÉLECTORALE

120 - 200 Vaughan Street  
Winnipeg, MB  
R3C 1T5

**Phone:** 204 945-5755  
**Toll Free:** 1 866 628-6837  
**Fax:** 204 945-6011  
**Email:** info@boundariescommission.mb.ca

200, rue Vaughan, bureau 120  
Winnipeg (Manitoba)  
R3C 1T5

**Téléphone :** 204 945-5755  
**Sans frais :** 1 866 628-6837  
**Télécopieur :** 204 945-6011  
**courriel :** info@boundariescommission.mb.ca

December 14, 2018

The Honourable Janice C. Filmon, C.M., O.M.  
Lieutenant Governor of Manitoba  
Room 235, Legislative Building  
Winnipeg, Manitoba R3C 0V8

The Honourable Myrna Driedger  
Speaker of the Legislative Assembly  
Room 244, Legislative Building  
Winnipeg, Manitoba R3C 0V8

Your Honours:

Pursuant to section 10(1) of *The Electoral Divisions Act*, the Electoral Divisions Boundaries Commission has the honour of submitting its final report to establish the area, boundaries and names of the electoral divisions within our province.

Section 10(3) of the Act states that the speaker must promptly table the report in the Assembly if the Assembly is sitting. If the Assembly is not sitting, the Speaker must table it within seven days after the next sitting begins. Section 10(4) further states that if the Assembly is not sitting, the Clerk of the Assembly must give a copy of the report to each member of the Assembly.

Respectfully submitted,

Richard Chartier, Chairperson  
Chief Justice of Manitoba

David Barnard  
President and Vice Chancellor  
University of Manitoba

Steven Robinson  
Interim President and Vice Chancellor  
Brandon University

Harvey Briggs  
Dean, Faculty of Arts, Business and Science  
University College of the North

Shipra Verma  
Chief Electoral Officer of Manitoba



# TABLE OF CONTENTS

---



PHOTOS COURTESY OF TRAVEL MANITOBA

## LETTER OF TRANSMITTAL

### INTRODUCTION

Commission Overview .....	9
Commission Members .....	9

### GOVERNING LAW

Statutory Law: The Legislation .....	10
Common Law: The Jurisprudence .....	11

### PROCESS

Methodology .....	12
Population Coverage .....	13
Commission Timeline .....	13

<b>PUBLIC CONSULTATION PROCESS .....</b>	<b>14</b>
--	-----------

<b>FINAL CONSIDERATIONS .....</b>	<b>16</b>
-----------------------------------	-----------

### FINAL DECISIONS

Northern Manitoba .....	18
Southern Manitoba .....	18
Winnipeg .....	20

<b>CONCLUSION .....</b>	<b>21</b>
-------------------------	-----------

<b>ACKNOWLEDGMENTS .....</b>	<b>22</b>
------------------------------	-----------

### APPENDIX A

Commission Member Biographies .....	24
-------------------------------------	----

### APPENDIX B

Map – Population and Variation from Quotient of Existing (2008) Electoral Divisions outside Winnipeg .....	26
--	----

Map – Population and Variation from Quotient of Existing (2008) Electoral Divisions inside Winnipeg .....	27
---	----

Table – Population and Variation from Quotient of Existing (2008) Electoral Divisions outside Winnipeg .....	28
--	----

Table – Population and Variation from Quotient of Existing (2008) Electoral Divisions inside Winnipeg .....	29
---	----

# TABLE OF CONTENTS

---

## APPENDIX C

Map – Population and Variation from Quotient of Final (2018) Electoral Divisions outside Winnipeg.....	30
Map – Population and Variation from Quotient of Final (2018) Electoral Divisions inside Winnipeg.....	31
Table – Population and Variation from Quotient of Final (2018) Electoral Divisions outside Winnipeg.....	32
Table – Population and Variation from Quotient of Final (2018) Electoral Divisions inside Winnipeg.....	33

## APPENDIX D

Legal Descriptions for Electoral Divisions outside Winnipeg.....	34
Legal Descriptions for Electoral Divisions inside Winnipeg.....	55

## MAP

Manitoba	
Winnipeg and Brandon	



# INTRODUCTION

---

## Commission Overview

The 2018 Electoral Divisions Boundaries Commission was established in January to review the electoral division boundaries for Manitoba provincial elections. Under *The Electoral Divisions Act*, the boundaries are reviewed every 10 years.

The Electoral Divisions Boundaries Commission is non-partisan and independent of government and its membership is set out in the Act. The responsibility of the Commission is to review all provincial electoral division boundaries, including the name of each electoral division. As Manitoba's population changes, the review is necessary to ensure effective representation.

## Commission Members

Section 8(2) of *The Electoral Divisions Act* specifies the membership of the Commission as follows: the Chief Justice of Manitoba, the President of each of the University of Manitoba, Brandon University and the University College of the North, and the Chief Electoral Officer of Manitoba. The members of the Commission are members by virtue of the offices they hold.

Section 8(6) of *The Electoral Divisions Act* states that if the Commission is required to perform or is performing duties under *The Electoral Divisions Act* and there is a vacancy on the Commission or any member is unable to act for any reason, his or her membership on the Commission will be filled by the following persons:

- a. In the case of the Chief Justice of Manitoba, by the Chief Justice of the Queen's Bench;
- b. In the case of a university president, by the dean of the Faculty of Arts of that university;
- c. In the case of the Chief Electoral Officer, by the Deputy Chief Electoral Officer.

When the present Commission was being constituted, the President of the University College of the North indicated that he would not be able to participate on the Commission. Accordingly, pursuant to Section 8(6) of *The Electoral Divisions Act*, the Dean of the Faculty of Arts, Business and Science of the University College of the North assumed membership on the Commission instead of the President of the University.

The members of the Commission are:

- Chief Justice of Manitoba, Richard Chartier
- University of Manitoba President and Vice-Chancellor, David Barnard
- Brandon University interim President and Vice-Chancellor, Steven Robinson
- University College of the North Dean of Arts, Business and Science, Harvey Briggs
- Chief Electoral Officer of Manitoba, Shipra Verma

The biographies of the members of the Commission are included in Appendix A to this report.

## GOVERNING LAW

---

### Statutory Law: The Legislation

The Commission is governed by *The Electoral Divisions Act*. The Act outlines the process to establish the Commission, the membership of the Commission, the method to calculate the population and the population quotient for electoral divisions, and factors to consider in establishing electoral division boundaries and names. Additionally, sections 11(1), 11(2), 11(3) of the Act provide governing factors for the Commission to consider in developing electoral division boundaries. The relevant provisions of the Act follow:

#### Population quotient

9(1) In the year 2008 and in each tenth year thereafter, the commission shall proceed to establish a quotient for each electoral division in the Province by dividing the total population of the province by 57.

#### Governing factors for consideration by commission

11(1) In determining the area to be included in, and in fixing the boundaries of, any electoral division, the commission shall take into consideration

- (a) the community or diversity of interests of the population;
- (b) the means of communication between the various parts thereof;
- (c) the physical features thereof; and
- (d) all other similar and relevant factors;

and, in so far as possible, shall include the whole area of each municipality in the same electoral division.

#### Variation in population basis

11(2) In determining the area to be included in, and in fixing the boundaries of, any electoral division, the commission shall consider

- (a) special geographic conditions, including the sparsity, density, and relative rate of growth, of population of a region of the province, the accessibility of a region of the province, and the size or shape of a region of the province; and
- (b) any special diversity or community of interests of the inhabitants of a region of the province;

and shall, subject to subsection (3), allow a variation in the population requirement of any electoral division where, in its opinion, those considerations, or any of them, render a variation desirable.

#### Population variation

11(3) Where the commission is of the opinion that a population variation is desirable for any reason set out in subsection (2), it may vary the population of any electoral division but no such variation shall,

- (a) where the electoral division is situated wholly south of the 53rd parallel, be greater than 10% more or 10% less than the quotient obtained under section 9; and
- (b) where the electoral division is situated wholly or partially north of the 53rd parallel, be greater than 25% more or 25% less than the quotient obtained under section 9.

## The Common Law: The Jurisprudence

The statutory responsibilities imposed on the Commission by *The Electoral Divisions Act* must be interpreted in accordance with the *Charter of Rights and Freedoms* and the jurisprudence.

Section 3 of the Charter guarantees that:

Every citizen of Canada has the right to vote in an election of members of the House of Commons or of a legislative assembly and to be qualified for membership therein.

The Charter right to vote is more than the right to cast a ballot. The right to vote is grounded in the right to “effective representation”. The right to effective representation, in the context of fixing electoral division boundaries, was reviewed in considerable detail by the Supreme Court of Canada in the 1991 Saskatchewan Reference Case. That case continues to be the leading authority. Madam Justice McLachlin, as she was then, wrote for the majority and stated in part at paragraphs 27, 29 – 32:

What are the conditions of effective representation? The first is relative parity of voting power. A system which dilutes one citizen’s vote unduly as compared with another citizen’s vote runs the risk of providing inadequate representation to the citizen whose vote is diluted...

Notwithstanding the fact that the value of a citizen’s vote should not be unduly diluted, it is a practical fact that effective representation often cannot be achieved without taking into account countervailing factors.

First, absolute parity is impossible. It is impossible to draw boundary lines which guarantee exactly the same number of voters in each district. Voters die, voters move. Even with the aid of frequent censuses, voter parity is impossible.

Secondly, such relative parity as may be possible of achievement may prove undesirable because it has the effect of detracting from the primary goal of effective representation. Factors like geography, community history, community interests and minority representation may need to be taken into account to ensure that our legislative assemblies effectively represent the diversity of our social mosaic...

It emerges therefore that deviations from absolute voter parity may be justified on the grounds of practical impossibility or the provision of more effective representation. Beyond this, dilution of one citizen’s vote as compared with another’s should not be countenanced...

Guided by the Supreme Court of Canada’s decision, the Commission attempted in its decision-making to achieve effective representation by recognizing the importance of relative parity of voting power, while departing from the principle of relative parity when it was necessary to do so in order to achieve effective representation. When departing from the principle of relative parity of voting power the Commission considered additional factors, including the community or diversity of interests within the population being reviewed, applicable municipal boundaries, the physical features of the subject area, and the means of communication and trade within that area.

## PROCESS

---

### Methodology

Section 9(3) of the Act requires the Commission to base its review on the Statistics Canada 2016 Census population for Manitoba. This total (1,278,365) is divided by the number of provincial electoral divisions in the province (57), establishing a quotient for each electoral division (approximately 22,427 people per electoral division).

**Population ÷ number of electoral divisions = Quotient**

 $÷$  $= 22,427$   
**1,278,365**                      **57**

To assist in the standardization of the decision-making process with respect to determining the boundaries of the electoral divisions, the Commission developed the following objective **working guidelines** to inform their deliberations and decisions:

- **Variance range:** To the extent that it does not detract from effective representation, the population of each electoral division will fall within a variance range of 10% (from -5% to +5% of quotient).
- **Projected population changes:** When considering the population variances of electoral divisions, informed population growth projections will be a relevant factor.
- **Community of interest:** To the extent possible, electoral divisions will respect communities of interest in regard to territorial integrity of municipalities, Indigenous communities and designated bilingual areas, as well as travel, trade and social factors.
- **Use of physical boundaries:** To the extent possible, where an electoral division needs to divide the aforesaid entities, rivers, lakes, railways, parks and major highways will be used as boundaries.
- **Name changes:** *The Principles and Procedures for Geographical Naming* (published by the Geographical Names Board of Canada) will be followed when the name of an electoral division needs to be changed.

The Manitoba Bureau of Statistics provided population information based on the Statistics Canada 2016 Census. The Commission contacted the City of Winnipeg, the Rural Development Institute at Brandon University, and the Manitoba Bureau of Statistics to provide the Commission with information regarding projected population changes or trends. The Commission received population projections from the City of Winnipeg and the *Dynamics of Rural and Northern Manitoba* report developed by the Rural Development Institute.

## Population Coverage

The Commission used the 2016 Census data to determine electoral division populations within the final boundaries.

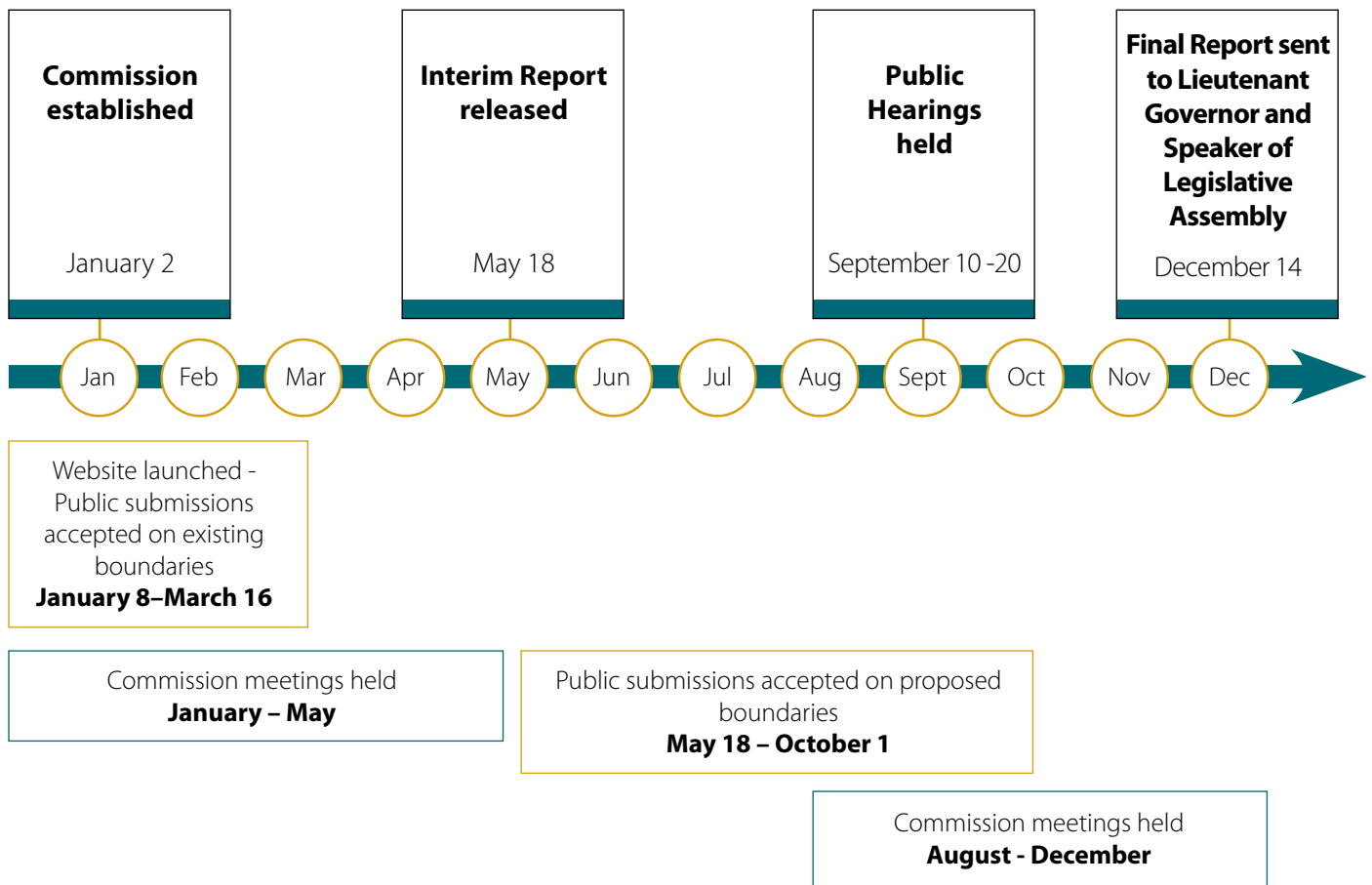
Statistics Canada and the Manitoba Bureau of Statistics informed the Commission that the 2016 Census was a timely and effective representation of the 2016 Manitoba population. Hence, no net undercount issues were noteworthy with respect to any specific electoral division or area of the province.

The Commission is aware that the 2016 Census population may differ from population counts obtained from administrative records of government departments, such as Indigenous and Northern Affairs Canada (INAC). Census numbers are a snapshot of the population based on where people reside on Census day, and may not be comparable to other administrative sources.

Government department population figures from INAC are administrative in nature, reflecting band membership and not necessarily reflecting where an individual resides. Accordingly, the Commission based the final electoral division populations on the information derived from the 2016 Census.

## Commission Timeline

Over the course of the one-year timeline for developing new boundaries, the Commission accepted public submissions for approximately eight months online, by email, fax, mail and through 13 public hearings.



## PUBLIC CONSULTATION PROCESS

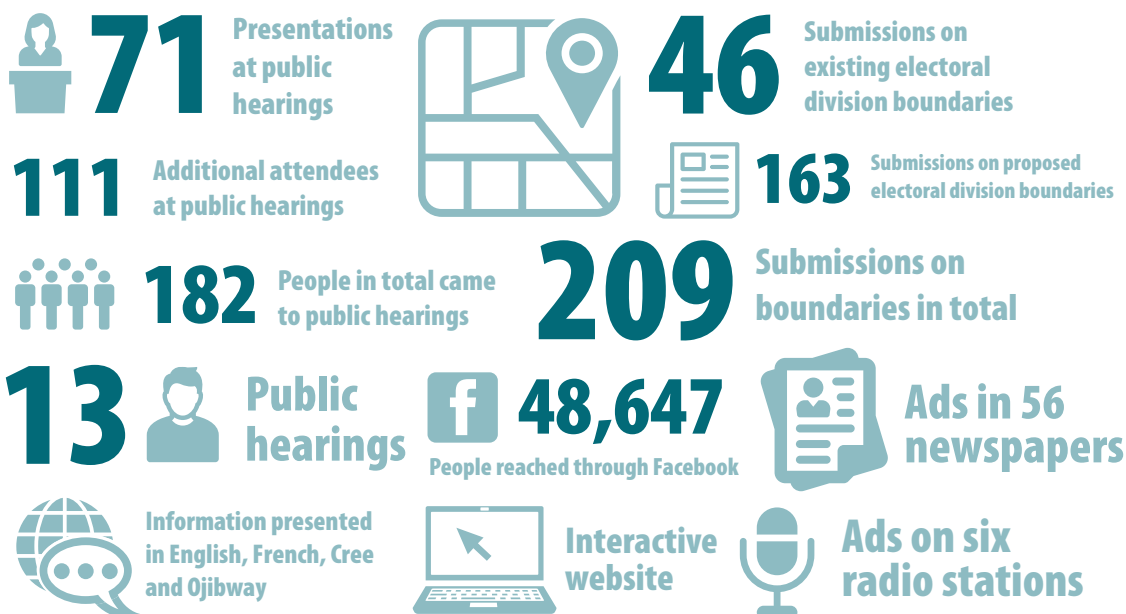
---

Public consultation is a key factor in ensuring public confidence in determining the electoral division boundaries. The Commission encouraged the public to participate in the electoral division boundaries process by making submissions. To this end the Commission directed and oversaw for the first time, the following consultative processes:

- **Interactive website:** The Commission used an interactive website to engage the public and facilitate the submission process. The website outlined information about the electoral division populations, allowed the public to create and submit new boundaries and names, provided information on the governing legislation, and described the ways in which the public could continue to participate in the boundary development process.
- **Public input sought from the start:** The Commission invited submissions from the public prior to the creation of the proposed boundaries. Between January 8 and March 16, 2018, the public was encouraged to make submissions in regard to changes to the existing electoral division boundaries. A total of 46 submissions were received. Many of those suggestions were reflected in the Interim Report.
- **Interim Report:** Following this initial consultation, the Commission released an Interim Report on May 18, 2018. The report presented the proposed maps and outlined the changes to the boundaries and names of the electoral divisions.
- **Social Media:** For the first time, the Commission used social media to reach out to a segment of the population that may not access conventional media. This form of electronic communication allowed the Commission to share information online and to encourage online participation.

The Commission also used extensive print, radio and online advertising to inform Manitobans about the opportunity to provide input on the electoral division boundaries and names. Radio advertising was done in English, French, Cree and Ojibway. Additionally, print, radio and television interviews were conducted with the media to provide more in-depth information regarding both proposed and final changes to the boundaries.

---



A second consultation period was conducted between May 18 and October 1, 2018. As required by the Act, the Commission held a series of public hearings across the province to hear public input into the proposed boundaries. Throughout the month of September, 13 public hearings were held in 11 locations across the province:

LOCATION	DATE
Winnipeg – Norwood Hotel	September 10, 2018 - 10:00a.m.
Churchill – Complex Overpass	September 11, 2018 - 10:00a.m.
Thompson – Best Western Thompson Hotel and Suites	September 11, 2018 - 5:00p.m.
Flin Flon – Victoria Inn	September 12, 2018 - 10:00a.m.
The Pas – Sam Waller Museum	September 12, 2018 - 5:00p.m.
Dauphin – Parkland Recreation Complex	September 13, 2018 - 10:00a.m.
Brandon – Victoria Inn	September 13, 2018 - 5:00p.m.
Beasejour – Sun-Gro Centre	September 18, 2018 - 10:00a.m.
Steinbach – Mennonite Heritage Village	September 18, 2018 - 5:00p.m.
Winkler – Quality Inn	September 19, 2018 - 10:00a.m.
Winnipeg – Best Western Plus Pembina Inn and Suites	September 19, 2018 - 5:00p.m.
Gimli – Lakeview Hotel	September 20, 2018 - 10:00a.m.
Winnipeg – Canad Inn Garden City	September 20, 2018 - 5:00p.m.



Commission members at first public hearing in Winnipeg.

## FINAL CONSIDERATIONS

In reaching its final decision with respect to the boundaries of the electoral divisions, the Commission was acutely conscious of three potentially conflicting considerations, which were:

- (i) a desire to properly take into account and give effect to the information and suggestions contained in the 46 submissions received prior to the release of the Interim Report;
- (ii) a desire to properly take into account and give effect to the information and suggestions received during the second consultation period (after the release of the Interim Report), including the submissions made during the public hearings in September 2018; and
- (iii) a recognition that changes made to the final report as a result of the information and suggestions received during the second consultation period would not be subject to further public consultations.

The Commission took into account all suggestions received. The Commission was aware that any change to one electoral division necessarily affects one or more other electoral divisions. As a result, despite some of the prior electoral divisions being within plus/minus 5% of the population quotient, many of those electoral divisions had their boundaries changed, partly as a consequence of a change to an adjacent or nearby electoral division. Indeed, 56 of the 57 electoral divisions had their boundaries adjusted.

Considerable feedback was received concerning the following electoral divisions and accounted for 39% of all submissions received on the proposed boundaries.

Electoral Division	Number of Submissions	Issue	Commission Response
Interlake-Gimli	17	The Town of Winnipeg Beach and Village of Dunnottar were not included in the Interlake-Gimli electoral division.	The Town of Winnipeg Beach and Village of Dunnottar are now included in the Interlake-Gimli electoral division.
Dauphin-Swan River	17	Dauphin and Swan River electoral divisions were combined into one electoral division.	Dauphin and Swan River remain separate electoral divisions.
Fort Rouge/Fort Garry	15	The neighbourhoods of Lord Roberts and Riverview were in different electoral divisions.	The neighbourhoods of Lord Roberts and Riverview are now together in the Fort Rouge electoral division.
St. James	14	The electoral division of St. James excluded the airport and traditional neighbourhoods.	The electoral division of St. James includes the airport and traditional neighbourhoods.

The Commission found the information presented during public hearings to be helpful and useful and greatly assisted the decision-making process. Presenters emphasized the importance of travel patterns, the size of electoral divisions and keeping communities of interest in the same electoral division. This feedback is recognized and reflected in the final decisions.



## FINAL DECISIONS

After a comprehensive review of all submissions and after carefully considering all suggestions, the Commission has made final decisions regarding the boundaries and names of the 57 electoral divisions of Manitoba.

### Population Growth in Winnipeg Area

The Census data showed that the population growth across the province varied. While the population of the north was growing, it was not growing as quickly as in large parts of southern Manitoba. In the Swan River, Dauphin and Riding Mountain areas of the province, there was a population drop. The Census data also showed important population growth mostly in the urban areas of the province, specifically in the Brandon, Morden, Winkler, Steinbach and Winnipeg regions. Given that Winnipeg constitutes over 55% of the population of the province, the absolute increase of population in Winnipeg will necessarily considerably exceed the net population growth of any electoral division outside Winnipeg (see table below). While the absolute numbers were higher in Winnipeg, it is acknowledged that some cities and towns had higher growth rates.

	A	B	C	D	E	F
	2006 Census Year	2011 Census Year	2016 Census Year	2006-2011 Population Increase/ Decrease	2011-2016 Population Increase/ Decrease	Rate of Increase/ Decrease (%) Between D & E
Population of Manitoba	1,148,400	1,208,270	1,278,365	+ 59,870	+ 70,095	+ 17%
Population of Winnipeg	633,450	663,620	705,245	+ 30,170	+ 41,625	+ 38%
Population outside of Winnipeg	514,950	544,650	573,120	+ 29,700	+ 28,470	- 4%

Formula used to calculate percentage (%):  
 $E - D = \text{Difference}$   
 $\text{Difference} \div D = \text{Rate of Increase/Decrease}$   
 $\text{Rate of Increase/Decrease} \times 100 = \text{Percentage (\%)}$

Based on all reports received, the population within the City of Winnipeg is expected to continue to grow more quickly than the population outside the City of Winnipeg. The Commission has also added the rural municipalities of Headingley and West St. Paul (population of 3,579 and 5,368 respectively for a total of 8,947) to the Winnipeg region. Therefore to accommodate this growth, better balance populations and reflect the addition of the rural municipalities, the number of electoral divisions for the Winnipeg area has increased by one, from 31 to 32.

## Northern Manitoba

While the population in northern Manitoba is growing, that growth is slower than in the south of the province. The 2016 Census data indicates that all current northern electoral divisions are below the established population quotient. Flin Flon is of particular concern as it is significantly below the quotient at -30.02%. Both Keewatinook\* and Thompson electoral divisions are also well below quotient, respectively at -20.14% and -13.19%. Only The Pas is close to quotient at -1.26%.

As a result of this reality, the Commission has made changes. The four northern electoral divisions were and will remain the largest in size. That is the reality when large parts of the north remain sparsely inhabited. The four northern electoral divisions will now essentially encompass most of the Crown lands of Manitoba or, put another way, the lands that have not been surveyed into townships. The Commission held public hearings in all four northern electoral divisions. It heard the concerns of the north and recognizes the challenges the large electoral divisions represent to achieving effective representation.

To best ensure effective representation, the Commission significantly reduced the size of Keewatinook (-7.19%), the largest electoral division in the province. It also addressed the previous significant population imbalance that existed between Flin Flon and The Pas. The Commission adjusted the boundaries so that each northern electoral division has no more than 10 to 14 community areas situated therein. This is in contrast to the southern electoral divisions where there are at least two to four times as many communities in their electoral divisions. The Commission also notes that new technologies have improved communication networks and access to government services.

The Commission has also made other changes. Given that The Pas electoral division will now encompass a large part of Lake Winnipeg, the name was changed to The Pas–Kameesak because Kameesak in Cree means “big”, a likely reference to Lake Winnipeg. Finally, in response to input during the public hearings, the Thompson electoral division was adjusted to include the communities of Nelson House, Gillam, Churchill and the other communities along the railroad line.

Under the new boundaries, the four electoral divisions in the north have better balanced populations, are more similar in size and respect travel patterns as well as communities of interest.

## Southern Manitoba

As described in *The Electoral Divisions Act*, the Commission endeavoured to keep municipalities in the same electoral division, and to keep communities of interest together. If a municipality was divided, a major feature such as a highway was used to create the boundary. Municipal amalgamations have increased the size of some municipalities making it challenging at times to keep a municipality entirely in one electoral division. The Commission is pleased that of the 137 municipalities, only five municipalities were divided (see table). In comparison, seven municipalities were divided in the 2008 Commission. A total of 13 municipalities were divided during the 2016 provincial general election as a result of amalgamations.

\*This corrects the spelling of “Keewatinook” in the 2008 version of *The Electoral Divisions Act*.

The following table lists the municipalities divided by the Commission.

<b>Municipality</b>	<b>Electoral Division</b>	<b>Rationale</b>
City of Brandon	Brandon East, Brandon West, Spruce Woods	To accommodate growth in Brandon
Hanover	Steinbach, La Vérendrye	To accommodate growth in Steinbach
Springfield	Springfield-Ritchot, Dawson Trail	To support population variance in Dawson Trail
St. Andrews	Selkirk, Interlake-Gimli	To include the Town of Winnipeg Beach and Village of Dunnottar in Interlake-Gimli
Stanley	Borderland, Morden-Winkler	To accommodate growth in Morden-Winkler

### **West**

In the western portion of the province, the area encompassing the electoral divisions of Swan River, Dauphin and Riding Mountain have seen a net population loss. This resulted in significant changes to the boundaries of these three electoral divisions and affected the electoral division of Arthur-Virden, which was renamed Turtle Mountain, in reference to the provincial park in the area. To respect travel patterns and communities of interest, Turtle Mountain includes municipalities east of Killarney.

Conversely, the City of Brandon has continued to experience considerable population growth. To accommodate this growth, the Commission added part of the City of Brandon to an adjacent electoral division. Brandon East (+2.75% relative to quotient) and Brandon West (-5.56%) are now divided by 18th Street and areas north of the Assiniboine River are part of the Spruce Woods electoral division. This change recognizes current populations and allows for continued projected growth.

### **Central**

The Commission adjusted electoral division boundaries in the central area of the province to reflect growth in Morden, Winkler, and in the area immediately southwest of Winnipeg. The electoral division of Midland (+2.06%) expands eastward to include a large part of the former electoral division of Morris. The Rural Municipality of Headingley was added to the Winnipeg electoral division of Roblin. The geographic size of Morden-Winkler (-1.91%) electoral division was reduced to accommodate the increasing populations in these communities. The boundaries of the electoral division of Emerson are adjusted and renamed Borderland (+2.22%).

Given that the northern part of the Interlake electoral division now forms part of The Pas-Kameesak, it was necessary to move the boundary eastward to encompass Gimli as well as other beach communities. The adjustments also better reflect the north/south travel patterns in this electoral division. The name of that electoral division is now Interlake-Gimli (+4.60%). The Rural Municipality of West St. Paul is added to the Winnipeg electoral division of McPhillips.

## **East**

The Commission made several changes to the electoral divisions in the southeastern areas of the province to accommodate growth in Dawson Trail (+3.58%), Steinbach (+2.40%) and La Vérendrye (+3.98%) electoral divisions. Boundaries were adjusted to ensure population balance and, to the extent possible, respect the designated bilingual areas. Accordingly, the rural municipalities of Ritchot and the western part of Springfield along with the Town of Niverville are grouped together because of their capital region interests. The name of this electoral division is now Springfield-Ritchot. The eastern part of the Rural Municipality of Springfield is added to Dawson Trail. The Rural Municipality of East St. Paul is added to the Rural Municipality of St. Clements to create the new electoral division of Red River North (-6.39%). As a result of growing populations in the southeast, the La Vérendrye electoral division was reduced in size and now includes the Rural Municipality of De Salaberry.

## **Winnipeg**

Winnipeg has experienced considerable population growth since the 2008 Commission. The growth in Winnipeg represents over half the entire population increase of Manitoba. As noted in Appendix B, *Population and Variation from Quotient of Existing Electoral Divisions inside Winnipeg*, there are some areas significantly over the population quotient. The electoral divisions of Fort Whyte, St. Norbert, The Maples, Southdale, and Rossmere have experienced considerable growth and boundaries needed to be adjusted to balance populations. The Commission considered current populations and projected growth in developing boundaries. To assist with boundary development, the Assiniboine River and Red River were used to divide Winnipeg into three regions; Northwest, Southwest and East.

### **Northwest**

In the Northwest, significant population growth and the inclusion of the Rural Municipality of West St. Paul required The Maples and Kildonan electoral division boundaries to be adjusted. The new electoral division of McPhillips (-0.84%) is added to reflect the projected population growth occurring in this area of Winnipeg. As a result of boundary changes in this region, significant landmarks that were previously associated with the names of electoral divisions are no longer located in the division. The former Logan electoral division no longer contains Logan Avenue. As a result, the name was changed to Union Station (-2.42%), to recognize the important role of the railway in the establishment of Winnipeg. The former Minto electoral division no longer contains the Minto Armouries, and was renamed Notre Dame (+2.02%) after the major thoroughfare that runs through it.

### **Southwest**

In the Southwest, Fort Whyte (-2.89%) boundaries were adjusted to include the communities of Linden Woods, Linden Ridge and Whyte Ridge. To align communities of interest, the growing areas of South Pointe and Bridgwater are consolidated to create the electoral division of Waverley (-7.17%). Fort Rouge (-4.60%) is adjusted to ensure the neighborhoods of Lord Roberts and Riverview are kept together. The Rural Municipality of Headingley is added to Charleswood and renamed Roblin (+2.40%) because of the major thoroughfare that runs through both entities. The area of St. Norbert is added to the Seine River (-2.35%) electoral division in the East. Other electoral divisions in the Southwest were adjusted to balance populations.

### **East**

As noted above, the area of St. Norbert and Seine River electoral division were combined and cross at the Red River. This new electoral division retains the name Seine River and brings together two areas of Winnipeg that share significant histories and interests. The new electoral division of Lagimodière (-5.41%) is created to accommodate significant growth in Sage Creek, while the other electoral division boundaries are shifted to balance populations. The previous electoral division of Kildonan was adjusted to cross the Red River to include the historical area of Kildonan on the east side of the Red River as well as River East and is renamed Kildonan-River East (-3.56%).

## CONCLUSION

---

Given the changes to Manitoba's population, the Commission has determined that modifications are required to the electoral division boundaries to meet the legislative requirement for population variation set out in *The Electoral Divisions Act* and related jurisprudence.

A total of 56 of the 57 electoral division boundaries have changed as a result of the Commission's review, along with 14 new electoral division names. Portage la Prairie is the one electoral division that has not changed. Appendices B and C provide information on electoral division populations and names. Appendix D provides the legal descriptions for all electoral division boundaries.

In developing the electoral division boundaries, the Commission has endeavoured to assure effective representation for all Manitobans.

Before December 31, 2018, the final report, including the final electoral division boundaries and names of the electoral divisions, must be presented to the Lieutenant Governor and to the Speaker of the Assembly. If the Assembly is sitting, the Speaker must table it in the Assembly. If the Assembly is not sitting, the Clerk of the Assembly will distribute the final report to each member of the Assembly, and the Speaker will table it in the Assembly within seven days of the commencement of the next sitting.

The new boundaries will come into effect for the first provincial general election held after December 31, 2018. Any byelection held before the general election will be based on the existing (2008) boundaries.

## ACKNOWLEDGMENTS

---

The work of the Commission has been informed by the advice and suggestions of the citizens of Manitoba. The Commission would like to thank Manitobans for participating in this important democratic process.

The Commission wishes to sincerely thank and recognize the following individuals for their expertise and support:

- Jacynth Lagacé, Secretary to the Commission, for her role in facilitating the administration and logistics of the Commission.
- Mark Robertson, Elections Manitoba, for supporting the work of the Commission.
- Heather Reeves, Andrew Curtis, Shivani Sajwan and Sarah Garner, Elections Manitoba, for their role as GIS technicians and in the development of maps.
- Michael Wisener and Tara Newton, Manitoba Bureau of Statistics, for their statistical expertise.
- Des Kappel, Provincial Toponymist, who assisted in the review and naming of electoral divisions.
- John McLean, for his skill in writing the boundary legal descriptions.
- Blair Graham, Q.C., for his legal advice.
- Brian Hansen, Alison Mitchell and Jeanne Zwiep, Elections Manitoba, for their assistance.

The Commission would also like to recognize the contributions of past Commissions for their work on redistribution. The Commission also acknowledges the vision of Manitoba Legislative Assembly members, who in 1955, passed legislation to create the first independent boundaries commission in Canada.

# APPENDICES

---

## APPENDIX A

---

### Commission Member Biographies

#### **RICHARD J.F. CHARTIER**

##### **Chief Justice of Manitoba**



Appointed to the Provincial Court in 1993 and to the Court of Appeal in 2006. Richard Chartier became Chief Justice of Manitoba in 2013. He has presided over many public commissions and his work has been recognized. In 1998, his report, *Above All, Common Sense*, was tabled in the Legislative Assembly and was fully implemented. In 2005, he received the Gold Medal for Innovative Management from the Canadian Institute of Public Administrators for his work on the Domestic Violence Front-End Team Project. In 2006, he received the United Nations Public Service Award in New York for that same project. In 2012, he presided over the Federal Electoral Boundaries Commission of Manitoba. In 2014, 2015 and 2017, he chaired inquiries reviewing the conduct of judges in Quebec and Ontario.

#### **DAVID T. BARNARD**

##### **President and Vice Chancellor**

##### **University of Manitoba**



David Barnard became President and Vice-Chancellor of the University of Manitoba on July 1, 2008. His career includes serving at the University of Regina as President and Vice-Chancellor (1998-2005) after being Vice-President (Administration) and Controller (1996-1998). He previously spent 19 years at Queen's University where he was a Professor of Computing and Information Science and assumed several increasingly senior administrative roles, including Associate to the Vice-Principals Research, Human Services and Resources at various times. In 2005-2008 he was COO of iQmetrix. David Barnard holds B.Sc., M.Sc. and Ph.D. degrees in computer science from the University of Toronto, a Dip.C.S. in theological studies from Regent College, University of British Columbia and a LL.M. from Osgoode Hall, York University.

#### **STEVEN ROBINSON**

##### **Interim President and Vice Chancellor**

##### **Brandon University**



Steven Robinson received degrees in Philosophy from the University of Regina and the University of Guelph before going to Queen's for a time to study Classics at the graduate level. He received his Ph.D. in 1998 from the University of Guelph with a dissertation on Plato's dialogue, *Symposium*. He has experience teaching broadly in interdisciplinary subjects and works in social and political philosophy with a special interest in philosophical anthropology and the philosophy of history. Steven Robinson has been at Brandon University since 1996, where he has served as Acting and Associate Dean of Arts and Vice-President (Academic & Provost).



---

## **HARVEY BRIGGS**

**Dean of the Faculty of Arts, Business and Science**

**University College of the North** <sup>[1]</sup>



Harvey Briggs completed his undergraduate and graduate education in Sociology at York University in Toronto. His academic work has primarily focused on the study of Indigenous peoples in Canada, with a particular emphasis on the study of social inequality. He has taught at a number of universities in Canada and is currently the Dean of the Faculty of Arts, Business and Science at the University College of the North.

## **SHIPRA VERMA**

**Chief Electoral Officer of Manitoba**



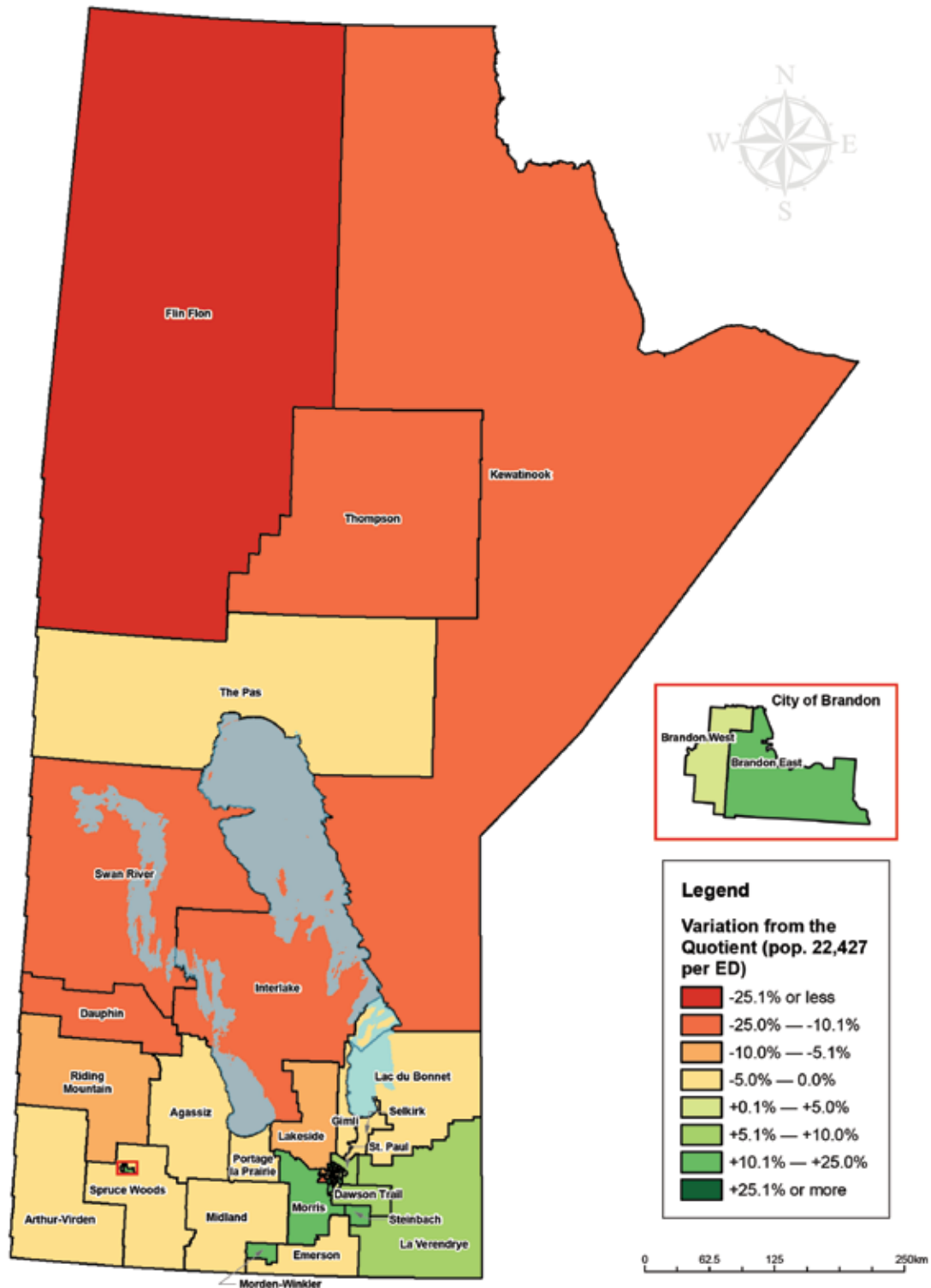
Shipra Verma was appointed as Manitoba's Chief Electoral Officer in 2013. Ms. Verma has more than 20 years of experience in election administration, public accounting and professional services. Since joining Elections Manitoba in 2004, she has gained electoral experience in all areas of the organization, serving as Deputy Chief Electoral Officer and Acting Chief Electoral Officer. She oversaw the conduct of the 2011 and 2016 general elections, as well as several byelections. She has participated in international election observer programs in the U.S.A., Ukraine, Russia and India, and is active on the Council on Governmental Ethics Laws currently serving as President. Shipra Verma is a CPA, CA with credentials in Canada, the United States and India.

## **NOTE**

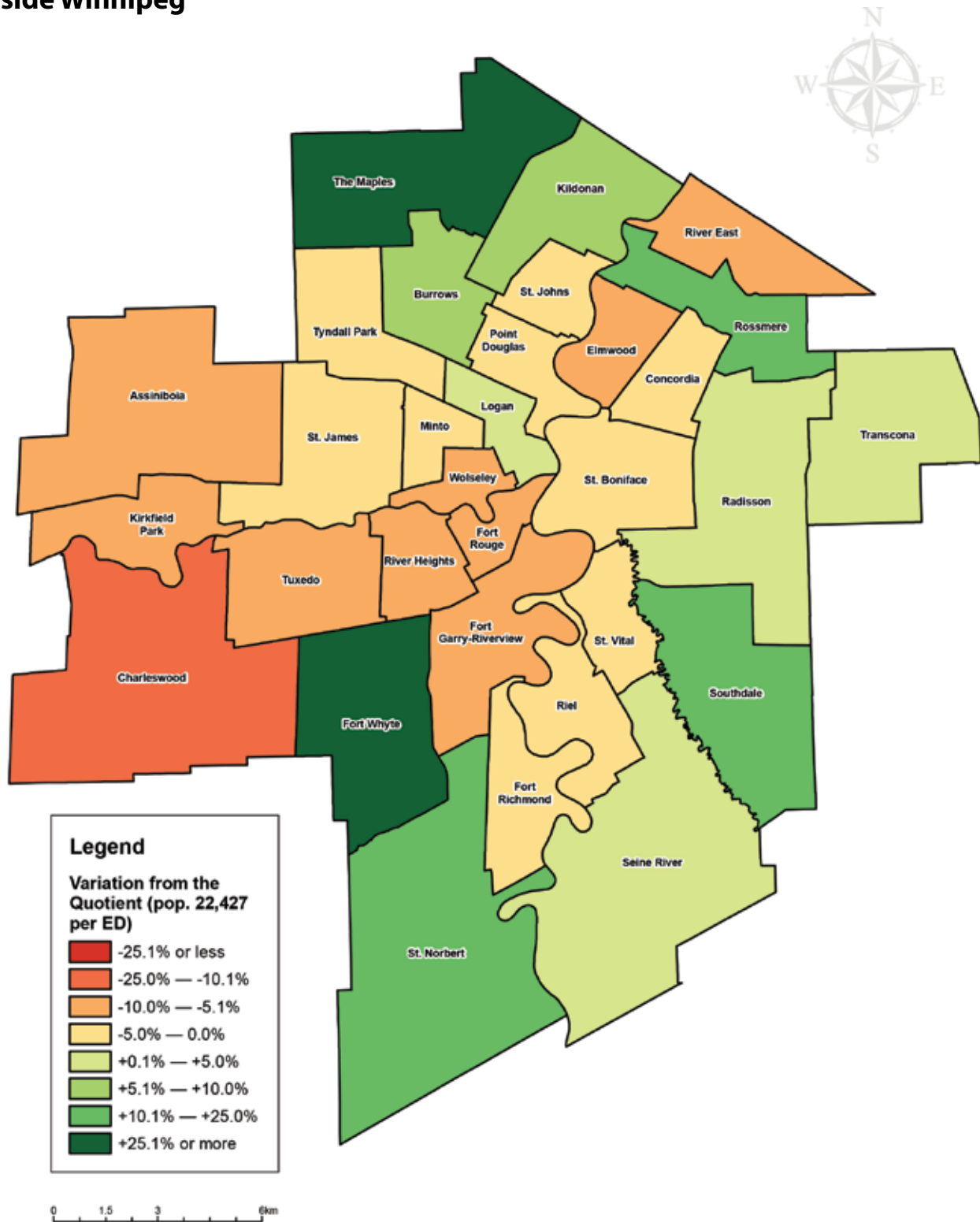
[1] Section 8(2) of *The Electoral Divisions Act* states that presidents of the universities named above will serve on the Boundaries Commission. However, if a university president is unavailable, section 8(6) allows that university's dean of the faculty of arts to serve on the Commission.

## APPENDIX B

### Map — Population and Variation from Quotient of Existing (2008) Electoral Divisions outside Winnipeg



## Map — Population and Variation from Quotient of Existing (2008) Electoral Divisions inside Winnipeg



**Table — Population and Variation from Quotient of Existing (2008) Electoral Divisions outside Winnipeg**

<b>Electoral Division</b>	<b>Population*</b>	<b>Variation</b>
Agassiz	22,240	-0.83 %
Arthur-Virden	21,410	-4.53 %
Brandon East	25,380	13.17 %
Brandon West	23,480	4.70 %
Dauphin	19,770	-11.85 %
Dawson Trail	24,275	8.24 %
Emerson	21,895	-2.37 %
Flin Flon	15,695	-30.02 %
Gimli	21,385	-4.65 %
Interlake	20,090	-10.42 %
Kewatinook	17,910	-20.14 %
La Verendrye	24,330	8.49 %
Lac du Bonnet	22,115	-1.39 %
Lakeside	20,410	-8.99 %
Midland	21,705	-3.22 %
Morden-Winkler	27,775	23.85 %
Morris	26,365	17.56 %
Portage la Prairie	21,755	-3.00 %
Riding Mountain	20,815	-7.19 %
Selkirk	21,800	-2.80 %
Spruce Woods	21,530	-4.00 %
St. Paul	23,810	6.17 %
Steinbach	27,135	20.99 %
Swan River	18,430	-17.82 %
The Pas	22,145	-1.26 %
Thompson	19,470	-13.19 %

\* Source: Statistics Canada 2016 Census

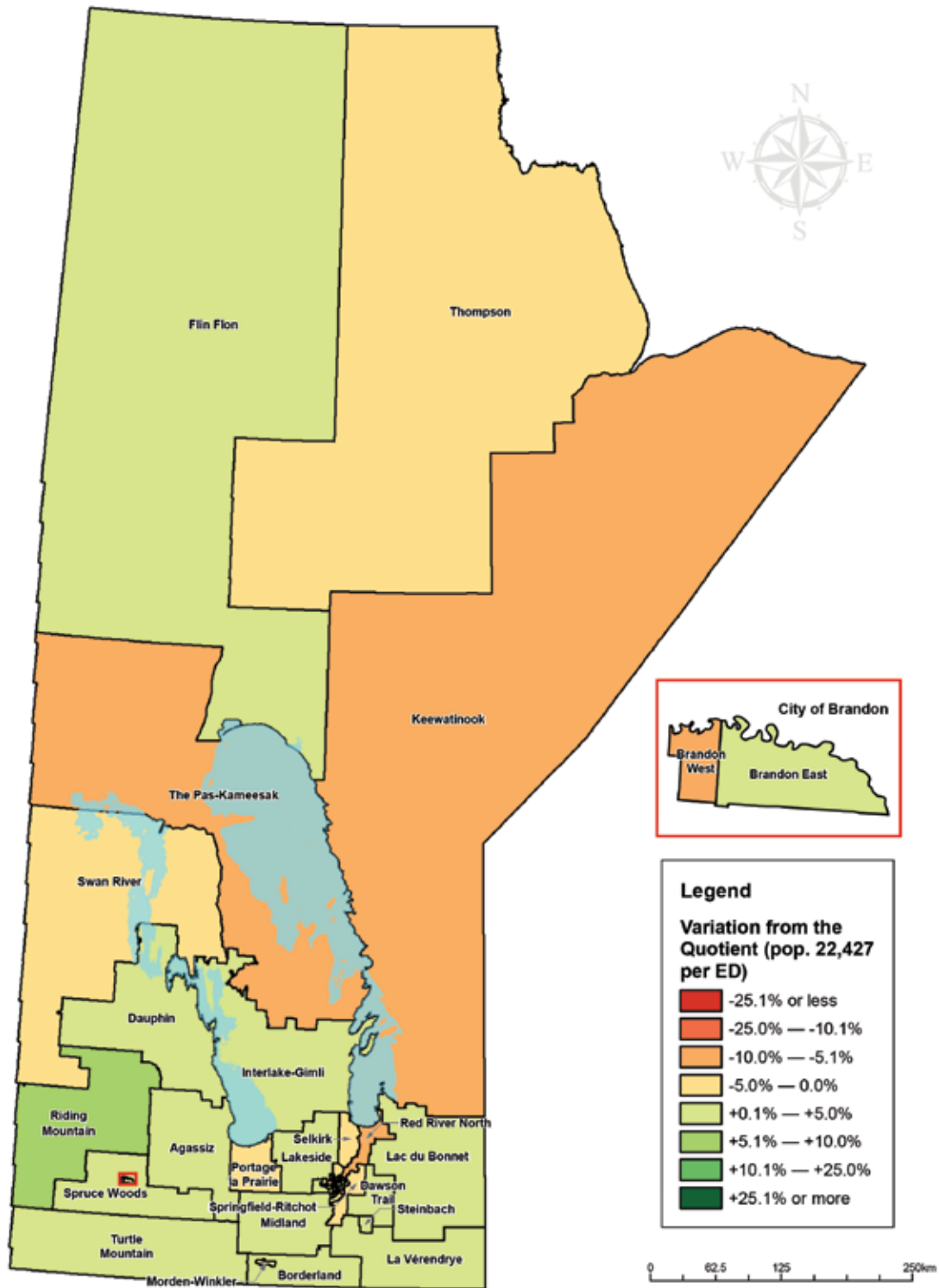
**Table — Population and Variation from Quotient of Existing (2008) Electoral Divisions inside Winnipeg**

<b>Electoral Division</b>	<b>Population*</b>	<b>Variation</b>
Assiniboia	20,540	-8.41 %
Burrows	23,690	5.63 %
Charleswood	19,385	-13.56 %
Concordia	21,520	-4.04 %
Elmwood	21,070	-6.05 %
Fort Garry-Riverview	20,620	-8.06 %
Fort Richmond	22,240	-0.83 %
Fort Rouge	20,905	-6.79 %
Fort Whyte	29,050	29.53 %
Kildonan	24,380	8.71 %
Kirkfield Park	21,150	-5.69 %
Logan	22,785	1.60 %
Minto	21,950	-2.13 %
Point Douglas	21,605	-3.67 %
Radisson	23,395	4.32 %
Riel	21,630	-3.55 %
River East	20,645	-7.95 %
River Heights	20,930	-6.67 %
Rossmere	26,140	16.56 %
Seine River	23,320	3.98 %
Southdale	26,665	18.90 %
St. Boniface	21,620	-3.60 %
St. James	21,800	-2.80 %
St. Johns	21,605	-3.67 %
St. Norbert	27,370	22.04 %
St. Vital	21,990	-1.95 %
The Maples	30,430	35.68 %
Transcona	23,535	4.94 %
Tuxedo	20,190	-9.97 %
Tyndall Park	22,025	-1.79 %
Wolseley	21,065	-6.07 %

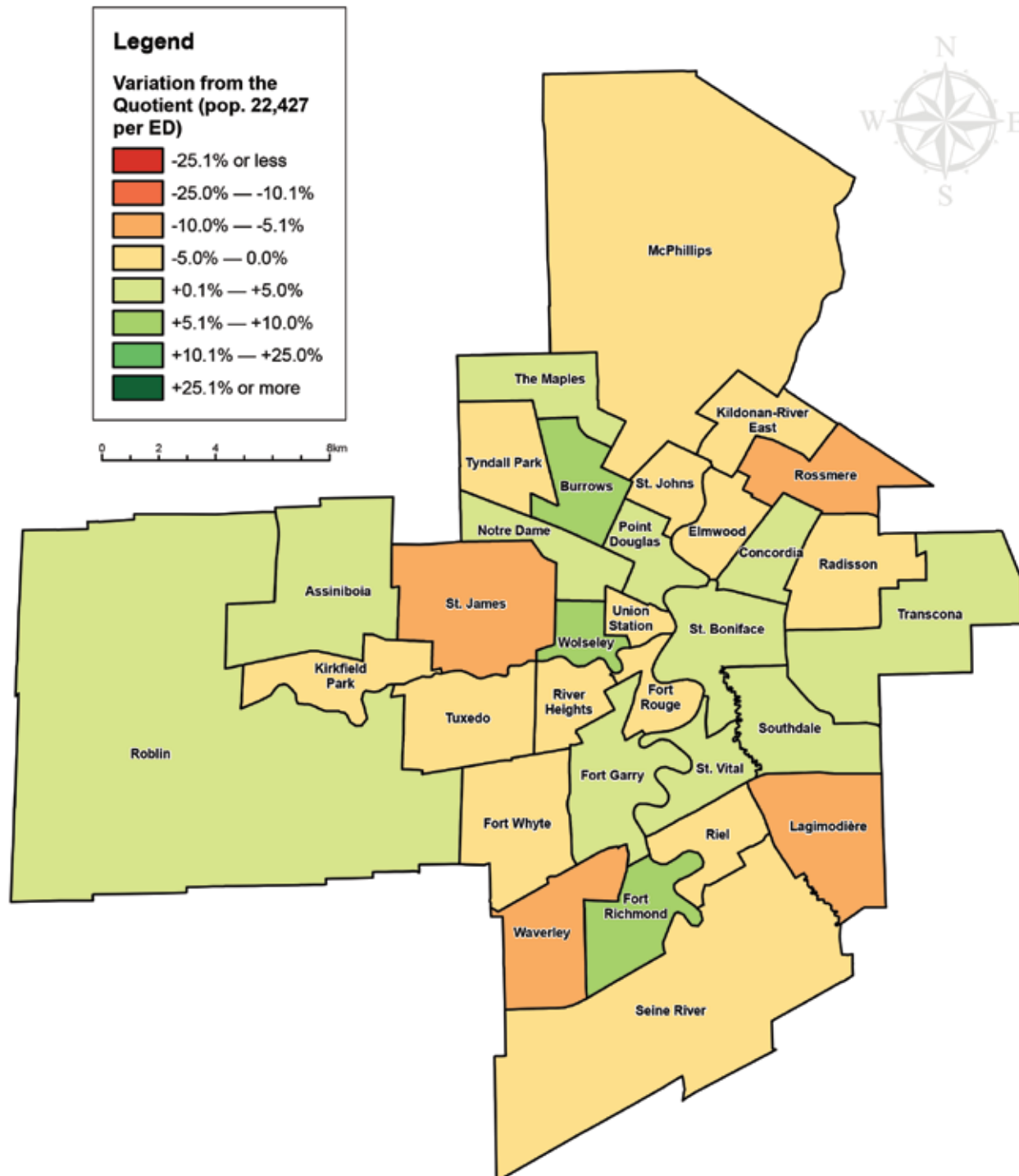
\* Source: Statistics Canada 2016 Census

# APPENDIX C

**Map — Population and Variation from Quotient of Final (2018) Electoral Divisions outside Winnipeg**



## Map — Population and Variation from Quotient of Final (2018) Electoral Divisions inside Winnipeg



**Table — Population and Variation from Quotient of Final (2018) Electoral Divisions outside of Winnipeg**

<b>Electoral Division</b>	<b>Population*</b>	<b>Variation</b>
Agassiz	23,215	3.51 %
Borderland**	22,925	2.22 %
Brandon East	23,045	2.75 %
Brandon West	21,180	-5.56 %
Dauphin	23,290	3.85 %
Dawson Trail	23,230	3.58 %
Flin Flon	22,935	2.26 %
Interlake-Gimli**	23,460	4.60 %
Keewatinook	20,815	-7.19 %
La Vérendrye	23,320	3.98 %
Lac du Bonnet	23,005	2.58 %
Lakeside	23,405	4.36 %
Midland	22,890	2.06 %
Morden-Winkler	22,000	-1.91 %
Portage la Prairie	21,745	-3.04 %
Red River North**	20,995	-6.39 %
Riding Mountain	24,260	8.17 %
Selkirk	22,030	-1.77 %
Springfield-Ritchot**	21,985	-1.97 %
Spruce Woods	22,810	1.71 %
Steinbach	22,965	2.40 %
Swan River	22,220	-0.93 %
The Pas-Kameesak**	20,910	-6.77 %
Thompson	22,380	-0.21 %
Turtle Mountain**	23,160	3.27 %

\* Source: Statistics Canada 2016 Census

\*\* Name Change



**Table — Population and Variation from Quotient of Final (2018) Electoral Divisions inside of Winnipeg**

<b>Electoral Division</b>	<b>Population*</b>	<b>Variation</b>
Assiniboia	22,840	1.84 %
Burrows	23,755	5.92 %
Concordia	23,185	3.38 %
Elmwood	22,220	-0.93 %
Fort Garry**	23,165	3.29 %
Fort Richmond	23,635	5.38 %
Fort Rouge	21,395	-4.60 %
Fort Whyte	21,780	-2.89 %
Kildonan-River East**	21,630	-3.56 %
Kirkfield Park	22,210	-0.97 %
Lagimodière**	21,215	-5.41 %
McPhillips**	22,240	-0.84 %
Notre Dame**	22,880	2.02 %
Point Douglas	23,320	3.98 %
Radisson	21,645	-3.49 %
Riel	22,105	-1.44 %
River Heights	22,180	-1.10 %
Roblin**	22,965	2.40 %
Rossmere	21,150	-5.70 %
Seine River	21,900	-2.35 %
Southdale	23,095	2.98 %
St. Boniface	22,765	1.51 %
St. James	20,990	-6.41 %
St. Johns	21,300	-5.03 %
St. Vital	22,575	0.66 %
The Maples	23,185	3.38 %
Transcona	22,925	2.22 %
Tuxedo	21,930	-2.22 %
Tyndall Park	21,455	-4.34 %
Union Station**	21,885	-2.42 %
Waverley**	20,820	-7.17 %
Wolseley	23,850	6.34 %

\* Source: Statistics Canada 2016 Census

\*\* Name Change

## APPENDIX D

---

### Legal Descriptions for Electoral Divisions outside of Winnipeg

#### **Agassiz Electoral Division**

All that portion of the Province of Manitoba contained within the following described limits:

Commencing at the northeast corner of Section 13 Township 19 Range 17 WPM; thence easterly along the northern limits of Sections 18 to 13 (both inclusive) Township 19 Ranges 16 to 12 WPM (both inclusive) to the intersection of the eastern limit of Range 12 WPM; thence southerly along the eastern limit of said Range 12 WPM to the northeast corner of Section 24 Township 18 Range 12 WPM; thence easterly along the northern limits of Sections 19 to 24 (both inclusive) Township 18 Range 11 WPM to the intersection of the eastern limit of Range 11 WPM; thence southerly along the eastern limit of said Range 11 WPM to the intersection of the northern limit of Township 17; thence easterly along the northern limit of said Township 17 to the intersection of the eastern limit of Range 10 WPM; thence northerly along the eastern limit of said Range 10 WPM to the intersection of the northern limit of Township 18; thence easterly along the northern limit of said Township 18 to the intersection of the western shore of Lake Manitoba; thence in a general southerly direction along the sinuous western shore of said Lake Manitoba to the intersection of the eastern limit of Township 14 Range 9 WPM; thence southerly along the eastern limit of said Range 9 WPM to the intersection of the northern limit of Township 9; thence easterly along the northern limit of Section 31 Township 9 Range 8 WPM to the northeast corner of said Section 31; thence southerly along the eastern limit of said Section 31 to the northeast corner of Section 30 of last said Township; thence easterly along the northern limits of Sections 29 and 28 of last said Township to the northeast corner of said Section 28; thence northerly along the eastern limit of Section 33 of last said Township to the northeast corner of the southeast quarter of said Section 33; thence easterly then northerly along the southern and eastern limits of the northwest quarter of Section 34 of last said Township to the northeast corner of said northwest quarter of Section 34; thence easterly along the northern limit of Township 9 to the eastern limit of Range 8 WPM; thence southerly along the eastern limit of said Range 8 WPM to the intersection of the northern limit of Township 6; thence westerly along the northern limit of said Township 6 to the intersection of the straight line production southerly of the western limit of the east half of the southwest quarter of Section 6 Township 7 Range 8 WPM; thence northerly along the last said production southerly and the western limit of the east half of said southwest quarter of Section 6 to the intersection of the northern limit of said southwest quarter of Section 6; thence westerly along the northern limit of said southwest quarter of Section 6 to the northeast corner of the southeast quarter of Section 1 Township 7 Range 9 WPM; thence westerly along the northern limit of the south half of last said Section 1 to the northeast corner of the west half of the southwest quarter of last said Section 1; thence southerly along the eastern limit of the said west half and its straight line production southerly to the intersection of the northern limit of said Township 6; thence westerly along the northern limit of said Township 6 to the intersection of the straight line production southerly of the eastern limit of Section 3 Township 7 Range 10 WPM; thence northerly along the last said straight line production southerly and the eastern limits of Sections 3, 10, 15 and 22 of last said Township to the northeast corner of Section 22 Township 7 Range 10 WPM; thence westerly along the northern limit of said Section 22 to the northeast corner of the northwest quarter of said Section 22; thence northerly along the western limits of the east halves of sections 27 and 34 of last said Township to the intersection of the northern limit of said Township 7; thence westerly along the northern limit of said Township 7 to the northeast corner of Section 32 of last said Township; thence northerly along the eastern limits of Sections 5, 8, 17, 20, 29 and 32 of Townships 8 and 9 Range 10 WPM to the intersection of the northern limit of said Township 9; thence westerly along the northern limit of said Township 9 to the intersection of the eastern limit of Range 13 WPM; thence southerly along the eastern limit of said Range 13 WPM to the northeast corner of Section 13 Township 9 Range 13 WPM; thence westerly along the northern limits of Sections 13 to 18 (both inclusive) of last said Township to the intersection of the eastern limit of Range 14 WPM; thence northerly along the eastern limit of said Range 14 WPM to the intersection of the northern limit of said Township 9; thence westerly along the northern limit of said Township 9 to the intersection of the eastern limit of Range 17 WPM; thence northerly along the eastern limit of said Range 17 WPM to the point of commencement.

---

## **Borderland Electoral Division**

All that portion of the Province of Manitoba contained within the following described limits:

Commencing at the northeast corner of Township 4 Range 2 EPM; thence southerly along the eastern limit of said Township to the intersection of the northern limit of Township 3; thence easterly along the northern limit of said Township 3 to the intersection of the eastern limit of Range 5 EPM; thence southerly along the eastern limit of said Range 5 and its straight line production southerly to the intersection of the Canada/United States boundary; thence westerly along the said Canada/United States boundary to the intersection of the straight line production southerly of the eastern limit of Range 7 WPM; thence northerly along the said straight line production southerly and the eastern limit of said Range 7 WPM to the intersection of the northern limit of said Township 3; thence easterly along the northern limit of said Township 3 to the northwest corner of Section 35 Township 3 Range 1 EPM; thence northerly along the straight line production southerly of the western limit of the Parish of Sainte Agathe and further along the western limit of said Parish to the northwest corner of River Lot 297 of said Parish; thence easterly along the northern limit of said River Lot and its straight line production easterly to the intersection of the centre thread of the Red River; thence in a general northerly direction along the sinuous centre thread of the Red River to the intersection of the straight line production westerly of the northern limit of River Lot 336 of said Parish; thence easterly along the last said straight line production and the northern limit of said River Lot 336 to the northeast corner of said River Lot 336; thence easterly along the straight line production westerly of the northern limit of the northeast quarter of Section 31 Township 4 Range 2 EPM and further along the northern limit of Township 4 to the point of commencement.

Excepting out of the above described land all that portion described thus:

Commencing at a point at the northeast corner of the southwest quarter of Section 13 Township 3 Range 6 WPM; thence easterly along the northern limit of the south half of said Section 13 to the northeast corner of the southeast quarter of said Section 13; thence easterly along the northern limits of the south halves of Section 18 and Section 17 of Township 3 Range 5 WPM to the intersection of the western limit of the easterly 220 feet of the southeast quarter of said Section 17; thence southerly along the western limit of said easterly 220 feet to the intersection of the southern limit of the northerly 50 feet of last said quarter Section; thence easterly along the southern limit of said northerly 50 feet to the intersection of the eastern limit of said Section 17; thence southerly along the eastern limit of said Section 17 to the northeast corner of Section 8 of last said Township; thence easterly along the northern limit of Section 9 of last said Township to the northeast corner of said Section 9; thence northerly along the eastern limit of Section 16 of last said Township to the northeast corner of said Section 16; thence easterly along the northern limit of Section 15 of last said Township to the northeast corner of said Section 15; thence southerly along the eastern limit of said Section 15 to the northeast corner of Section 10 of last said Township; thence easterly along the northern limits of Sections 11 and 12 of last said Township to the northeast corner of said Section 12; thence easterly along the northern limits of Sections 7, 8, 9, 10 and 11 of Township 3 Range 4 WPM to the northeast corner of the west half of said Section 11; thence southerly along the eastern limits of the west halves of said Section 11 and of Section 2 of last said Township and its production southerly to the intersection of the northern limit of Section 35 Township 2 Range 4 WPM; thence westerly along the northern limit of said Section 35 to the northeast corner of Section 34 of last said Township; thence southerly along the eastern limit of said Section 34 to the northeast corner of Section 27 of last said Township; thence westerly along the northern limits of Sections 27, 28 and 29 of last said Township to the northeast corner of the northwest quarter of said Section 29; thence northerly along the eastern limit of the west half of Section 32 of last said Township to the intersection of the southern limit of the northerly 880 feet perpendicular of the northwest quarter of said Section 32; thence westerly along last said southern limit and its straight line production westerly to the intersection of the eastern limit of Section 31 of last said Township; thence northerly along the eastern limit of said Section 31 to the intersection of the northern limit of Township 2; thence westerly along the northern limit of said Township 2 to the northeast corner of Section 32 Township 2 Range 5 WPM; thence southerly along the eastern limit of said Section 32 to the northeast corner of the southeast quarter of said Section 32; thence westerly along the southern limit of the north half of said Section

---

32 to the northeast corner of the southeast quarter of Section 31 of last said Township; thence northerly along the eastern limit of Section 31 of last said Township and its straight line production northerly to the intersection of the southern limit of Section 5 Township 3 Range 5 WPM; thence westerly along the southern limit of last said Section 5 and further along the southern limit of Section 6 of last said Township and its production westerly to the southeast corner of Section 1 Township 3 Range 6 WPM; thence westerly along the southern limit of last said Section 1 to the intersection of the eastern limit of the southwest quarter of last said Section 1; thence northerly and westerly along the eastern and northern limits of last said southwest quarter to the northeast corner of the southeast quarter of Section 2 of last said Township; thence northerly along the eastern limits of last said Section 2 and Section 11 of last said Township to the northeast corner of the southeast quarter of last said Section 11; thence easterly then northerly along the southern and eastern limits of the northwest quarter of Section 12 of last said Township to the northeast corner of last said northwest quarter; thence northerly along the eastern limit of said southwest quarter of Section 13 of last said Township to the point of commencement.

### **Brandon East Electoral Division**

All that portion of the City of Brandon lying south of the centre thread of the Assiniboine River which lies east of Eighteenth Street and Eighteenth Street north.

### **Brandon West Electoral Division**

All that portion of the City of Brandon lying south of the centre thread of the Assiniboine River which lies west of Eighteenth Street and Eighteenth Street north.

### **Dauphin Electoral Division**

All that portion of the Province of Manitoba contained within the following described limits:

Commencing at the intersection of the northwestern shore of Lake Manitoba and the eastern limit of Township 33 Range 15 WPM; thence northerly along the eastern limit of Range 15 WPM to the intersection of the northern limit of Township 35; thence westerly along the northern limit of said Township 35 to a point at the most eastern intersection of the northern limit of Section 33 Township 35 Range 18 WPM and the shore of Lake Winnipegosis; thence in general northerly, southerly then westerly directions along the sinuous shore of said Lake Winnipegosis to the intersection of the northern limit of Township 31 Range 19 WPM; thence westerly along the northern limit of Township 31 to the intersection of the eastern limit of Range 21 WPM; thence southerly along the eastern limit of said Range 21 WPM to the intersection of the northern limit of Township 27; thence westerly along the northern limit of said Township 27 to the intersection of the eastern limit of Range 26 WPM; thence southerly along the eastern limit of said Range 26 WPM to the northeast corner of Section 13 Township 26 Range 26 WPM; thence westerly along the northern limit of said Section 13 to the intersection of the western limit of the east half of said Section 13; thence southerly along the said western limit to the northeast corner of the northwest quarter of Section 12 of last said Township; thence southerly then westerly along the eastern and southern limits of last said northwest quarter to the northeast corner of the south half of Section 11 of last said Township; thence westerly along the northern limit of said south half to the northeast corner of the southeast quarter of Section 10 of last said Township; thence westerly then southerly along the northern and western limits of last said southeast quarter to the northwest corner of the northeast quarter of Section 3 of last said Township; thence southerly then easterly along the western and southern limits of last said northeast quarter to the southeast corner of last said northeast quarter; thence easterly along the northern limits of the south halves of Sections 2 and 1 of last said Township to the intersection of the eastern limit of said Range 26 WPM; thence

---

southerly along the eastern limit of said Range 26 WPM to the intersection of the northern limit of Township 22; thence easterly along the northern limit of Township 22 to the intersection of the eastern limit of Range 18 WPM; thence southerly along the eastern limit of Range 18 WPM to the intersection of the northern limit of Township 21; thence easterly along the northern limit of Township 21 to the northwest corner of the northeast quarter of Section 31 Township 21 Range 16 WPM; thence southerly and easterly along the western and southern limits of the northeast quarter of said Section 31 to the northeast corner of the southeast quarter of said Section 31; thence southerly along the eastern limit of said Section 31 to the northeast corner of Section 30 of last said Township; thence easterly along the northern limits of Sections 29 and 28 of last said Township to the northwest corner of the northeast quarter of said Section 28; thence southerly and easterly along the western and southern limits of the northeast quarter of said Section 28 to the northeast corner of the southeast quarter of said Section 28; thence southerly along the eastern limits of Sections 28 and 21 to the northeast corner of Section 16 of last said Township; thence easterly along the northern limits of Sections 15 and 14 of last said Township to the northeast corner of the northwest quarter of said Section 14; thence southerly and westerly along the eastern and southern limits of the northwest quarter of said Section 14 to the northeast corner of the southeast quarter of last said Section 15; thence southerly along the eastern limit of last said Section 15 to the northeast corner of Section 10 of last said Township; thence easterly along the northern limit of Section 11 of last said Township to the northeast corner of the northwest quarter of last said Section 11; thence southerly along the eastern limit of last said northwest quarter to the northwest corner of the southeast quarter of last said Section 11; thence easterly along last said southeast quarter to the intersection of the eastern limit of last said southeast quarter; thence southerly along the eastern limits of said Section 11 and Section 2 of last said Township to the northeast corner of Section 35 Township 20 Range 16 WPM; thence southerly along the eastern limit of said Section 35 to the northeast corner of the southeast quarter of said Section 35; thence easterly and southerly along the northern and eastern limits of the southwest quarter of Section 36 of last said Township to the northwest corner of the east half of Section 25 of last said Township; thence southerly along the western limit of the east half of said Section 25 to the northwest corner of the northeast quarter of Section 24 of last said Township; thence easterly along the northern limit of said Section 24 to the intersection of the eastern limit of Range 16 WPM; thence southerly along the eastern limit of Range 16 WPM to the northeast corner of Section 13 Township 19 Range 16 WPM; thence easterly along the northern limits of Sections 18 to 13 (both inclusive) Township 19 Ranges 15 to 12 WPM (both inclusive) to the intersection of the eastern limit of Range 12 WPM; thence southerly along the eastern limit of said Range 12 WPM to the northeast corner of Section 24 Township 18 Range 12 WPM; thence easterly along the northern limits of Sections 19 to 24 (both inclusive) Township 18 Range 11 WPM to the intersection of the eastern limit of Range 11 WPM; thence southerly along the eastern limit of said Range 11 WPM to the intersection of the northern limit of Township 17; thence easterly along the northern limit of said Township 17 to the intersection of the eastern limit of Range 10 WPM; thence northerly along the eastern limit of said Range 10 WPM to the intersection of the northern limit of Township 18; thence easterly along the northern limit of said Township 18 to the intersection of the western shore of Lake Manitoba; thence in a general northwesterly direction along the sinuous western shore of said Lake Manitoba to the point of commencement.

---

### **Dawson Trail Electoral Division**

All that portion of the Province of Manitoba contained within the following described limits:

Commencing at the northeast corner of Section 31 Township 12 Range 6 EPM; thence southerly along the eastern limits of Sections 31, 30, 19, 18, 7 and 6 of Townships 12 to 10 (both inclusive) Range 6 EPM to the intersection of the northern limit of Township 9; thence westerly along the northern limit of said Township 9 to the northeast corner of Section 33 Township 9 Range 4 EPM; thence southerly along the eastern limits of Sections 33, 28, 21, 16, 9 and 4 of Townships 9 and 8 Range 4 EPM to the intersection of the northern limit of Township 7; thence easterly along the northern limit of said Township 7 to the intersection of the eastern limit of Range 6 EPM; thence southerly along the eastern limit of said Range 6 EPM to the intersection of the northern limit of Township 6; thence easterly along the northern limit of said Township 6 to the intersection of the straight line production southerly of the eastern limit of Section 1 Township 7 Range 8 EPM; thence northerly along the eastern limit of Range 8 EPM to the intersection of the northern limit of Township 11; thence westerly along the northern limit of said Township 11 to the intersection of the eastern limit of said Range 6 EPM; thence northerly along the eastern limit of said Range 6 EPM to the intersection of the northern limit of Township 12; thence westerly along the northern limit of said Township 12 to the point of commencement.

### **Flin Flon Electoral Division**

All that portion of the Province of Manitoba contained within the following described limits:

Commencing at a point at the intersection of the straight line production westerly of the northern limit of Township 63 and the Manitoba/Saskatchewan boundary; thence easterly along said straight line production and the northern limit of Township 63 to the intersection of Provincial Trunk Highway 6; thence in a general southerly direction along said Highway 6 to the intersection of the northern limit of Township 54; thence easterly along the northern limit of said Township 54 to the intersection of the northwestern shore of Lake Winnipeg; thence in a general northeasterly and southeasterly direction along the sinuous northern shore of said Lake Winnipeg to the intersection of the northern limit of Township 50; thence easterly along the northern limit of said Township 50 to the intersection of the eastern limit of Range 1 WPM; thence northerly along the eastern limit of said Range 1 WPM to the intersection of the northern limit of Township 67; thence westerly along the northern limit of said Township 67 to the intersection of the eastern limit of Range 12 WPM; thence northerly along the eastern limit of said Range 12 WPM to the intersection of the northern limit of Township 84; thence easterly along the northern limit of said Township 84 to the intersection of the eastern limit of said Range 1 WPM; thence northerly along the eastern limit of said Range 1 WPM and its straight line production northerly to the intersection of the Manitoba/Nunavut boundary; thence westerly along the said Manitoba/Nunavut boundary to the intersection of the Manitoba/Saskatchewan boundary; thence southerly along the said Manitoba/Saskatchewan boundary to the point of commencement.

---

## **Interlake-Gimli Electoral Division**

All that portion of the Province of Manitoba contained within the following described limits:

### Parcel 1:

Commencing at the intersection of the southeastern shore of Lake Manitoba and the northern limit of Township 15 Range 4 WPM; thence easterly along the northern limit of said Township 15 to the intersection of the eastern limit of Range 2 WPM; thence northerly along the eastern limit of said Range 2 WPM to the intersection of the northeastern shore of East Shoal Lake; thence in a general northwesterly direction along the sinuous shore of said East Shoal Lake to the intersection of the northern limit of Section 36 Township 16 Range 2 WPM; thence easterly along the northern limit of Township 16 to the intersection of the eastern limit of Range 1 WPM; thence northerly along the eastern limit of said Range 1 WPM to the intersection of the northern limit of Township 17; thence easterly along the northern limit of said Township 17 to the intersection of the western limit of the east half of Section 33 Township 17 Range 4 EPM; thence southerly along the western limit of the east half of Section 33 of last said Township to the northeast corner of the northwest quarter of Section 28 of last said Township; thence easterly along the northern limit of said Section 28 to the northeast corner of said Section 28; thence southerly along the eastern limits of Sections 28, 21, 16 and 9 of last said Township to the northeast corner of Section 4 of last said Township; thence easterly along the northern limit of Section 3 of last said Township to the intersection of the eastern limit of Canadian Pacific Railway Plan 691 WLTO; thence southerly along the eastern limit of said Railway Plan to the intersection of the southern limit of Victoria Avenue Plan 2615 WLTO; thence easterly along the southern limit of said Victoria Avenue and its production easterly to the intersection of the centreline of the government road allowance lying between Sections 2 and 3 Township 17 Range 4 EPM; thence northerly along last said centreline to the intersection of the straight line production westerly of the southern limit of Ralph Avenue Plan 2822 WLTO; thence easterly along the last said production and the southern and southeastern limits of said Ralph Avenue to the intersection of the southwestern shore of Lake Winnipeg; thence in general northerly, southwesterly and northeasterly directions along the sinuous western shore of said Lake Winnipeg to the intersection of the northern limit of Township 26 Range 4 EPM; thence westerly along the northern limit of Township 26 to the intersection of the eastern limit of Range 1 WPM; thence southerly along the eastern limit of said Range 1 WPM to the intersection of the northern limit of Township 25; thence westerly along the northern limit of said Township 25 to the intersection of the eastern limit of Range 3 WPM; thence northerly along the eastern limit of said Range 3 WPM to the intersection of the northern limit of Township 26; thence in a westerly direction along the northern limit of said Township 26 to the intersection of the eastern limit of Range 4 WPM; thence southerly along the eastern limit of said Range 4 WPM to the intersection of the northern limit of Township 25; thence westerly along the northern limit of said Township 25 to the intersection of the straight line production southerly of the eastern limit of Section 6 Township 26 Range 5 WPM; thence northerly along the eastern limit of said Section 6 to the northeast corner of said Section 6; thence easterly along the northern limit of Section 5 of last said Township to the northeast corner of said Section 5; thence northerly along the eastern limit of Section 8 of last said Township to the northeast corner of said Section 8; thence westerly along the northern limit of said Section 8 to the northeast corner of Section 7 of last said Township; thence northerly along the eastern limits of Sections 18, 19, 30 and 31 of last said Township to the intersection of the northern limit of Township 26; thence westerly along the northern limit of said Township 26 to the intersection of the straight line production southerly of the eastern limit of Range 6 WPM; thence northerly along the eastern limit of said Range 6 WPM to the intersection of the northern limit of Township 27; thence westerly along the northern limit of said Township 27 to the intersection of the eastern limit of Range 7 WPM; thence northerly along the eastern limit of said Range 7 WPM; to the intersection of the northern limit of Township 28; thence westerly along the northern limit of said Township 28 to the intersection of the eastern limit of Range 8 WPM; thence northerly along the eastern limit of said Range 8 WPM to the intersection of the eastern shore of Lake St. Martin; thence in a general southwesterly and northwesterly direction along the sinuous shore of said Lake St. Martin to the intersection of the southern limit of the Fairford Indian Reserve No. 50; thence in a general westerly then northeasterly direction (an irregular line) along the southern, southwestern and northwestern boundaries of said Fairford Indian Reserve to the intersection of

---

the southern shore of Pineimuta Lake; thence in a general northwesterly, southwesterly, southerly, westerly, northerly and southeasterly direction along the sinuous shore of said Pineimuta Lake to the intersection of the northern limit of said Fairford Indian Reserve; thence easterly, southerly and southeasterly along the northern limit of said Fairford Indian Reserve to the intersection of the western limit of the Little Saskatchewan Indian Reserve No. 48 as shown on Plan No 51149 Canada Land Survey Records; thence in a general northeasterly then easterly direction along the western and northern limits of said Plan to the intersection of the western shore of said Lake St. Martin; thence in a general northeasterly direction along the sinuous shore of said Lake St. Martin to the intersection of the western limit of The Narrows Indian Reserve No. 49; thence in general northerly and easterly directions (an irregular line) along the western and northern limits of said The Narrows Indian Reserve to the intersection of the western shore of said Lake St. Martin; thence in a general northerly direction along the sinuous shore of said Lake St. Martin to the intersection of the northern limit of Fractional Section 10 Township 33 Range 7 WPM; thence westerly along the northern limits of said Fractional Section 10 and Sections 9 to 7 (both inclusive) of last said Township to the northeast corner of Section 12 Township 33 Range 8 WPM; thence westerly along the northern limits of sections 12 to 7 (both inclusive) of last said Township to the intersection of the eastern limit of Range 9 WPM; thence northerly along the eastern limit of said Range 9 WPM to the intersection of the northern limit of Township 33; thence westerly along the northern limit of said Township 33 to the intersection of the eastern limit of Range 10 WPM; thence southerly along the eastern limit of said Range 10 WPM to the northeast corner of Section 13 Township 32 Range 10 WPM; thence westerly along the northern limits of Sections 13 to 18 (both inclusive) of last said Township to the intersection of the eastern limit of the community of Homebrook – Peonan Point as shown on Plan 20414 filed in the Office of the Director of Surveys; thence northerly, westerly and southerly (an irregular line) along the eastern, northern and western limits of said Plan 20414 to the intersection of the northwestern shore of Lake Manitoba; thence in a general westerly, southerly then easterly direction along the sinuous shore of said Lake Manitoba to the point of commencement.

Parcel 2:  
Hecla Island

### **Keewatinook Electoral Division**

All that portion of the Province of Manitoba contained within the following described limits:

Commencing at the intersection of the western shore of Hudson Bay and the Manitoba/Ontario boundary; thence in a general westerly direction along the sinuous western shore of said Hudson Bay to the centre thread of the Nelson River; thence in a general southwesterly direction along the said centre thread to the intersection of the eastern limit of Range 2 East of the Second Meridian East; thence southerly along the eastern limit of said Range 2 East to the intersection of the northern limit of Township 86; thence westerly along the northern limit of said Township 86 to the intersection of the eastern limit of Range 22 EPM; thence southerly along the eastern limit of said Range 22 EPM to the intersection of the northern limit of Township 83; thence westerly along the northern limit of Township 83 to the intersection of the eastern limit of Range 16 EPM; thence southerly along the eastern limit of said Range 16 EPM to the intersection of the northern limit of Township 69; thence westerly along the northern limit of said Township 69 to the intersection of the eastern limit of Range 1 WPM; thence southerly along the eastern limit of said Range 1 WPM to the intersection of the northern limit of Township 50; thence westerly along the northern limit of said Township 50 to the intersection of the eastern shore of Lake Winnipeg; thence in a general southerly direction along the sinuous eastern shore of said Lake Winnipeg to the intersection of the northern limit of Township 31; thence westerly along the northern limit of said Township 31 to the northeast corner of Section 36 Township 31 Range 5 EPM; thence westerly along the northern limit of said Section 36 and its straight line production westerly to the intersection of the western shore of said Lake Winnipeg; thence in general southerly, easterly, northerly and easterly directions along the sinuous western,



---

southern and eastern shore of said Lake Winnipeg to the intersection of the western limit of Fort Alexander Indian Reserve No. 3; thence southerly, easterly, southerly, easterly, northerly, westerly and northerly (an irregular line) along the western, southern and eastern limits of said Fort Alexander Indian Reserve to the intersection of the left bank of the Winnipeg River; thence northerly along the straight line production northerly of the eastern limit of Fort Alexander Indian Reserve to the intersection of the centre thread of the Winnipeg River; thence in a general easterly direction along the sinuous centre thread of said Winnipeg River to the intersection of the straight line production southerly of the eastern limit of said Fort Alexander Indian Reserve; thence northerly along the last said production southerly and the eastern limit of said Fort Alexander Indian Reserve to the intersection of the northern limit of Township 18; thence easterly along the northern limit of said Township 18 to the intersection of the eastern limit of Range 10 EPM; thence southerly along the eastern limit of said Range 10 EPM to the intersection of the straight line production westerly of the northern limit of said Township 18; thence easterly along the northern limit of said Township 18 to the intersection of the eastern limit of Range 11 EPM; thence southerly along the eastern limit of said Range 11 EPM to the intersection of the northern limit of Township 17; thence easterly along the northern limit of said Township 17 and its straight line production easterly to the intersection of said Manitoba/Ontario boundary; thence northerly and northeasterly along the said Manitoba/Ontario boundary to the point of commencement.

Excepting out of the above described land: Hecla Island and Elk Island.

### **La Vérendrye Electoral Division**

All that portion of the Province of Manitoba contained within the following described limits:

Commencing at the northeast corner of Section 33 Township 7 Range 4 EPM; thence westerly along the northern limit of Township 7 to the intersection of the eastern limit of SP Lot 1 Plan 19178 WLTO; thence southerly and westerly along the eastern and southern limits of said Lot 1 to the southwest corner of said Lot 1; thence westerly, southerly and easterly along the northern, western and southern limits of the southwest quarter of Section 32 of last said Township to the southeast corner of said southwest quarter of Section 32; thence southerly along the straight line production southerly of the eastern limit of said southwest quarter of Section 32 to the northeast corner of the north half of the northwest quarter of Section 29 of last said Township; thence southerly and westerly along the eastern and southern limits of said north half to the intersection of the western limit of said Section 29; thence southerly along the western limit of said Section 29 to the intersection of the straight line production easterly of the southern limit of Section 30 Township 7 Range 4 EPM; thence westerly along the last said straight line production easterly and the southern limit of said Section 30 and further along the straight line production westerly of the southern limit of said Section 30 to the intersection of the eastern limit of Range 3 EPM; thence southerly along the eastern limit of said Range 3 EPM and its straight line production southerly to the intersection of the northern limit of the Settlement of Rat River; thence westerly along the northern limit of said settlement and the northern limit of Township 6 to the intersection of the straight line production southerly of the eastern limit of River Lot 538 Parish of Sainte Agathe; thence northerly along the last said straight line production southerly to the southeast corner of said River Lot 538; thence westerly and southerly (an irregular line) along the eastern limit of said Parish to the intersection of the straight line production northerly of the eastern limit of Section 13 Township 6 Range 2 EPM; thence southerly along the eastern limit of Range 2 EPM to the intersection of the northern limit of Township 3; thence easterly along the northern limit of said Township 3 to the intersection of the eastern limit of said Range 5 EPM; thence southerly along the eastern limit of Range 5 EPM and its straight line production southerly to the intersection of the Canada/United States boundary; thence easterly along the said Canada/United States boundary to the intersection of the Manitoba/Ontario boundary; thence northerly along said Manitoba/Ontario boundary to the intersection of the straight line production easterly of the northern limit of Township 6; thence westerly along the northern limit of said Township 6 to the northeast corner of Section 36 Township 6 Range 13 EPM; thence southerly along the eastern limit of Range 13 EPM to the northeast corner of Section 24 Township 5 Range

---

13 EPM; thence westerly along the northern limits of Sections 24 to 19 (both inclusive) of Township 5, Ranges 13 EPM to 9 EPM to the northeast corner of Section 24 Township 5 Range 8 EPM; thence northerly along the eastern limit of Range 8 EPM to the intersection of the northern limit of said Township 6; thence westerly along the northern limit of said Township 6 to the northeast corner of Section 36 Township 6 Range 6 EPM; thence southerly along the eastern limit of Range 6 EPM to the northeast corner of Section 12 of last said Township; thence westerly along the northern limits of Sections 12 to 7 (both inclusive) of last said Township to the northeast corner of Section 12 Township 6 Range 5 EPM; thence westerly along the northern limit of last said Section 12 to the northeast corner of Section 11 of last said Township; thence northerly along the eastern limits of Sections 14, 23, 26 and 35 of last said Township to the intersection of the northern limit of said Township 6; thence westerly along the northern limit of said Township 6 to the intersection of the straight line production southerly of the eastern limit of Section 3 Township 7 Range 5 EPM; thence northerly along the last said production southerly and along the eastern limits of Sections 3, 10, 15, 22, 27 and 34 of last said Township to the intersection of the northern limit of last said Township; thence westerly along the northern limit of Township 7 to the point of commencement.

### **Lac du Bonnet Electoral Division**

All that portion of the Province of Manitoba contained within the following described limits:

#### Parcel 1:

Commencing at the northeast corner of Section 33 Township 12 Range 6 EPM; thence northerly along the eastern limit of Section 4 Township 13 Range 6 EPM to the southeast corner of the northeast quarter of said Section 4; thence westerly and northerly along the southern and western limits of the northeast quarter of said Section 4 to the northwest corner of the northeast quarter of said Section 4; thence northerly along the western limit of the east half of Section 9 Township 13 Range 6 EPM to the intersection of the southern limit of the north half of the west half of Legal Subdivision 15 of said Section 9; thence easterly and northerly along the southern and eastern limits of the north half of the west half of said Legal Subdivision 15 to the intersection of the northern limit of said Section 9; thence easterly along the northern limit of said Section 9 to the northeast corner of said Section 9; thence northerly along the eastern limits of Sections 16, 21, 28 and 33 of last said Township to the intersection of the northern limit of Township 13; thence easterly along the northern limit of said Township 13 to the northeast corner of Section 34 of last said Township; thence northerly along the eastern limits of Sections 3, 10, 15, 22, 27 and 34 of Township 14 Range 6 EPM to the intersection of the northern limit of said Township 14; thence easterly along the northern limit of said Township 14 to the intersection of the straight line production southerly of the eastern limit of Section 1 Township 15 Range 6 EPM; thence northerly along the said straight line production southerly and the eastern limit of Range 6 EPM to the northeast corner of Section 13 of last said Township; thence easterly along the northern limits of Sections 18 to 13 (both inclusive) of Township 15, Ranges 7 EPM and 8 EPM to the intersection of the eastern limit of Range 8 EPM; thence northerly along the eastern limit of said Range 8 EPM to the intersection of the northern limit of Township 15; thence westerly along the northern limit of said Township 15 to the northeast corner of Section 32 Township 15 Range 8 EPM; thence northerly along the eastern limits of Sections 5, 8, 17, 20, 29 and 32 Township 16 Range 8 EPM to the intersection of the northern limit of Township 16; thence westerly along the northern limit of said Township 16 to the northeast corner of Section 34 Township 16 Range 7 EPM; thence northerly along the eastern limits of Sections 3, 10, 15, 22, 27 and 34 Township 17 Range 7 EPM to the northeast corner of last said Section 34; thence northerly along the eastern limits of Sections 3 and 10 Township 18 Range 7 EPM to the northeast corner of last said Section 10; thence westerly along the northern limits of Sections 10 and 9 of last said Township to the northeast corner of Section 8 of last said Township; thence northerly along the eastern limits of Sections 17, 20, 29 and 32 of last said Township to the intersection of the southeastern shore of Lake Winnipeg; thence in general northerly and easterly directions along the sinuous southeastern shore of said Lake Winnipeg to the intersection of the western limit of Fort Alexander Indian Reserve No. 3; thence southerly, easterly, southerly, easterly, northerly, westerly and northerly (an irregular line) along the western, southern and eastern limits of said Fort Alexander Indian Reserve to the intersection of the left bank of the Winnipeg River; thence northerly along the straight line production northerly of the eastern limit of Fort Alexander Indian Reserve

---

to the intersection of the centre thread of the Winnipeg River; thence in a general easterly direction along the sinuous centre thread of said Winnipeg River to the intersection of the straight line production southerly of the eastern limit of said Fort Alexander Indian Reserve; thence northerly along the last said production southerly and the eastern limit of said Fort Alexander Indian Reserve to the intersection of the northern limit of Township 18; thence easterly along the northern limit of said Township 18 to the intersection of the eastern limit of Range 10 EPM; thence southerly along the eastern limit of said Range 10 EPM to the intersection of the straight line production westerly of the northern limit of said Township 18; thence easterly along the northern limit of said Township 18 to the intersection of the eastern limit of Range 11 EPM; thence southerly along the eastern limit of said Range 11 EPM to the intersection of the northern limit of Township 17; thence easterly along the northern limit of said Township 17 and its straight line production easterly to the intersection of said Manitoba/Ontario boundary; thence southerly along the Manitoba/Ontario boundary to the intersection of the straight line production easterly of the northern limit of Township 6; thence westerly along the northern limit of said Township 6 to the intersection of the eastern limit of Range 13 EPM; thence southerly along the eastern limit of Range 13 EPM to the northeast corner of Section 24 Township 5 Range 13 EPM; thence westerly along the northern limits of Sections 24 to 19 (both inclusive) of Township 5, Ranges 13 EPM to 9 EPM (both inclusive) to the northeast corner of Section 24 Township 5 Range 8 EPM; thence northerly along the eastern limit of Range 8 EPM to the intersection of the northern limit of Township 11; thence westerly along the northern limit of said Township 11 to the intersection of the eastern limit of said Range 6 EPM; thence northerly along the eastern limit of said Range 6 EPM to the intersection of the northern limit of Township 12; thence westerly along the northern limit of said Township 12 to the point of commencement.

Parcel 2:  
Elk Island

### **Lakeside Electoral Division**

All that portion of the Province of Manitoba contained within the following described limits:

Commencing at the northeast corner of Township 9 Range 4 WPM; thence northerly along the eastern limit of Range 4 WPM to the southeast corner of the southeast quarter of Section 24 Township 12 Range 4 WPM; thence easterly along the straight line production westerly of the southern limit of the Parish of Baie Saint Paul to the southwest corner of River Lot 75 of said Parish; thence northerly, westerly, southerly, westerly and northerly (an irregular line) along the southern and western limits of said Parish to the intersection of the northern limit of the Parish of Poplar Point; thence southwesterly and westerly along the northern limit of last said Parish to the intersection of the straight line production southerly of the eastern limit of Range 5 WPM; thence northerly along the eastern limit of said Range 5 WPM to the intersection of the southern shore of Lake Manitoba; thence in a general northeasterly direction along the sinuous shore of said Lake Manitoba to the intersection of the northern limit of Township 15; thence easterly along the northern limit of said Township 15 to the intersection of the eastern limit of Range 2 WPM; thence northerly along the eastern limit of said Range 2 WPM to the intersection of the northeastern shore of East Shoal Lake; thence in a general northwesterly direction along the sinuous shore of said East Shoal Lake to the intersection of the northern limit of Section 36 Township 16 Range 2 WPM; thence easterly along the northern limit of Township 16 to the intersection of the eastern limit of Range 1 WPM; thence northerly along the eastern limit of said Range 1 WPM to the intersection of the northern limit of Township 17; thence easterly along the northern limit of said Township 17 to the northeast corner of Section 33 Township 17 Range 3 EPM; thence southerly along the eastern limits of Sections 33, 28, 21, 16, 9, and 4 of Townships 17 to 13 (both inclusive) Range 3 EPM to the intersection of the northern limit of Township 12; thence westerly along the northern limit of said Township 12 to the intersection of the eastern limit of Range 2 EPM; thence southerly along the eastern limit of said Range 2 EPM to the intersection of the northern limit of the City of Winnipeg; thence westerly, southerly and westerly (an irregular line) along the northwestern limit of said City of Winnipeg to the intersection of the northern limit of Outer Two Mile Lot 94A of the Parish of Saint Charles; thence westerly along the northern limit of the outer two miles of the Parish of Saint Charles and the Parish of Headingley to the intersection of the eastern limit of the Parish of Saint Francois Xavier; thence southerly along the eastern limits of Outer Two Mile Lot 227 and River Lots 227 and 1 of last said Parish to the

---

intersection of the southern limit of last said Parish; thence westerly along the southern limit of last said Parish to the intersection of the straight line production northerly of the eastern limit of the southeast quarter of Section 1 Township 10 Range 1 WPM; thence southerly along last said production and the eastern limit of said southeast quarter of Section 1 to the intersection of the northern limit of Township 9; thence westerly along the northern limit of said Township 9 to the point of commencement.

### **Midland Electoral Division**

All that portion of the Province of Manitoba contained within the following described limits:

Commencing at the northeast corner of Township 3 Range 8 WPM; thence easterly along the northern limit of Township 3 to the northwest corner of Section 35 Township 3 Range 1 EPM; thence northerly along the straight line production southerly of the western limit of the Parish of Sainte Agathe and further along the western limit of said Parish to the northwest corner of River Lot 297 of said Parish; thence easterly along the northern limit of said River Lot and its straight line production easterly to the intersection of the centre thread of the Red River; thence in a general northerly direction along the sinuous centre thread of the Red River to the intersection of the straight line production westerly of the northern limit of River Lot 336 of said Parish; thence easterly along the last said straight line production and the northern limit of said River Lot 336 to the northeast corner of said River Lot 336; thence easterly along the straight line production westerly of the northern limit of the northeast quarter of Section 31 Township 4 Range 2 EPM and further along the northern limit of Township 4 to the intersection of the eastern limit of Range 2 EPM; thence northerly along the eastern limit of said Range 2 EPM and its straight line production northerly to the intersection of the southern limit of River Lot 482 of the Parish of Sainte Agathe; thence easterly along the southern limit of said River Lot 482 to the intersection of the eastern limit of said Parish of Sainte Agathe; thence northerly and easterly (an irregular line) along the eastern limit of said Parish to the southeast corner of River Lot 532 of said Parish; thence northwesterly along the southwestern limit of said Lot 532 to the southeast corner of River Lot 530 of said Parish; thence westerly along the southern limits of River Lots 530 and 529 of said Parish to the intersection of the western limit of said Parish; thence in generally northerly and easterly directions (an irregular line) along the western limit of said Parish and its production northerly to the southwest corner of River Lot 2 of the Parish of Saint Norbert; thence in generally northerly and westerly directions (an irregular line) along the western limit of last said Parish to the intersection of the southern limit of the City of Winnipeg; thence in generally northerly and westerly directions along the western limit of the City of Winnipeg to the intersection of the southern limit of Outer Two Mile Lot 83 of the Parish of Saint Charles; thence westerly along the southern limit of the Parish of Saint Charles and its straight line production westerly to the southeast corner of Outer Two Mile Lot 1 of the Parish of Headingley; thence westerly along the southern limit of the said Parish of Headingley and its straight line production westerly to the southeast corner of River Lot 1 of the Parish of Saint Francois Xavier; thence westerly along the southern limit of said Parish of Saint Francois Xavier to the intersection of the straight line production northerly of the eastern limit of the southeast quarter of Section 1 Township 10 Range 1 WPM; thence southerly along last said production and the eastern limit of said southeast quarter of Section 1 to the intersection of the northern limit of Township 9; thence westerly along the northern limit of said Township 9 to the intersection of the eastern limit of Range 8 WPM; thence southerly along the eastern limit of said Range 8 WPM to the point of commencement.

---

## **Morden-Winkler Electoral Division**

All that portion of the Province of Manitoba contained within the following described limits:

Commencing at a point at the northeast corner of the southwest quarter of Section 13 Township 3 Range 6 WPM; thence easterly along the northern limit of the south half of said Section 13 to the northeast corner of the southeast quarter of said Section 13; thence easterly along the northern limits of the south halves of Section 18 and Section 17 of Township 3 Range 5 WPM to the intersection of the western limit of the easterly 220 feet of the southeast quarter of said Section 17; thence southerly along the western limit of said easterly 220 feet to the intersection of the southern limit of the northerly 50 feet of last said quarter Section; thence easterly along the southern limit of said northerly 50 feet to the intersection of the eastern limit of said Section 17; thence southerly along the eastern limit of said Section 17 to the northeast corner of Section 8 of last said Township; thence easterly along the northern limit of Section 9 of last said Township to the northeast corner of said Section 9; thence northerly along the eastern limit of Section 16 of last said Township to the northeast corner of said Section 16; thence easterly along the northern limit of Section 15 of last said Township to the northeast corner of said Section 15; thence southerly along the eastern limit of said Section 15 to the northeast corner of Section 10 of last said Township; thence easterly along the northern limits of Sections 11 and 12 of last said Township to the northeast corner of said Section 12; thence easterly along the northern limits of Sections 7, 8, 9, 10 and 11 of Township 3 Range 4 WPM to the northeast corner of the west half of said Section 11; thence southerly along the eastern limits of the west halves of said Section 11 and of Section 2 of last said Township and its production southerly to the intersection of the northern limit of Section 35 Township 2 Range 4 WPM; thence westerly along the northern limit of said Section 35 to the northeast corner of Section 34 of last said Township; thence southerly along the eastern limit of said Section 34 to the northeast corner of Section 27 of last said Township; thence westerly along the northern limits of Sections 27, 28 and 29 of last said Township to the northeast corner of the northwest quarter of said Section 29; thence northerly along the eastern limit of the west half of Section 32 of last said Township to the intersection of the southern limit of the northerly 880 feet perpendicular of the northwest quarter of said Section 32; thence westerly along last said southern limit and its straight line production westerly to the intersection of the eastern limit of Section 31 of last said Township; thence northerly along the eastern limit of said Section 31 to the intersection of the northern limit of Township 2; thence westerly along the northern limit of said Township 2 to the northeast corner of Section 32 Township 2 Range 5 WPM; thence southerly along the eastern limit of said Section 32 to the northeast corner of the southeast quarter of said Section 32; thence westerly along the southern limit of the north half of said Section 32 to the northeast corner of the southeast quarter of Section 31 of last said Township; thence northerly along the eastern limit of Section 31 of last said Township and its straight line production northerly to the intersection of the southern limit of Section 5 Township 3 Range 5 WPM; thence westerly along the southern limit of last said Section 5 and further along the southern limit of Section 6 of last said Township and its production westerly to the southeast corner of Section 1 Township 3 Range 6 WPM; thence westerly along the southern limit of last said Section 1 to the intersection of the eastern limit of the southwest quarter of last said Section 1; thence northerly and westerly along the eastern and northern limits of last said southwest quarter to the northeast corner of the southeast quarter of Section 2 of last said Township; thence northerly along the eastern limits of last said Section 2 and Section 11 of last said Township to the northeast corner of the southeast quarter of last said Section 11; thence easterly then northerly along the southern and eastern limits of the northwest quarter of Section 12 of last said Township to the northeast corner of last said northwest quarter; thence northerly along the eastern limit of said southwest quarter of Section 13 of last said Township to the point of commencement.

---

### **Portage la Prairie Electoral Division**

All that portion of the Province of Manitoba contained within the following described limits:

Commencing at the northeast corner of Township 9 Range 4 WPM; thence northerly along the eastern limit of Range 4 WPM to the southeast corner of the southeast quarter of Section 24 Township 12 Range 4 WPM; thence easterly along the straight line production westerly of the southern limit of the Parish of Baie Saint Paul to the southwest corner of River Lot 75 of said Parish; thence northerly, westerly, southerly, westerly and northerly (an irregular line) along the southern and western limits of said Parish to the intersection of the northern limit of the Parish of Poplar Point; thence southwesterly and westerly along the northern limit of last said Parish to the intersection of the straight line production southerly of the eastern limit of Range 5 WPM; thence northerly along the eastern limit of said Range 5 WPM to the intersection of the southern shore of Lake Manitoba; thence in a general westerly direction along the sinuous southern shore of said Lake Manitoba to the intersection of the eastern limit of Range 9 WPM; thence southerly along the eastern limit of said Range 9 WPM to the intersection of the northern limit of Township 9; thence easterly along the northern limit of Section 31 Township 9 Range 8 WPM to the northeast corner of said Section 31; thence southerly along the eastern limit of said Section 31 to the northeast corner of Section 30 of last said Township; thence easterly along the northern limits of Sections 29 and 28 of last said Township to the northeast corner of said Section 28; thence northerly along the eastern limit of Section 33 of last said Township to the northeast corner of the southeast quarter of said Section 33; thence easterly then northerly along the southern and eastern limits of the northwest quarter of Section 34 of last said Township to the northeast corner of said northwest quarter of Section 34; thence easterly along the northern limit of Township 9 to the point of commencement.

### **Red River North Electoral Division**

All that portion of the Province of Manitoba contained within the following described limits:

Commencing at the intersection of the centre thread of the Red River and the most northeasterly limit of the City of Winnipeg; thence southeasterly along said northeasterly limit to the intersection of the southern limit of Outer Two Mile Lot 119 of the Parish of Saint Paul; thence in generally northerly and easterly directions (an irregular line) along the eastern limit of last said Parish and its production northerly to the southeast corner of Outer Two Mile Lot 288 of the Parish of Saint Andrews; thence in generally northerly and easterly directions along the eastern limit of last said Parish to the intersection of the southern limit of Plan 9978 WLTO; thence in generally easterly and northerly directions (an irregular line) along the southern and eastern limits of said Plan 9978 to the intersection of the southwestern limit of Plan 7145 WLTO; thence in generally northerly and easterly directions along the eastern limit of the Parish of Saint Andrews (an irregular line) to the southeast corner of Outer Two Mile Lot 145 of last said parish; thence southerly along the straight line production southerly of the eastern limit of said Lot 145 to the intersection of the northern limit of Township 12; thence easterly along the northern limit of said Township 12 to the northeast corner of Section 33 Township 12 Range 6 EPM; thence northerly along the eastern limit of Section 4 Township 13 Range 6 EPM to the southeast corner of the northeast quarter of said Section 4; thence westerly and northerly along the southern and western limits of the northeast quarter of said Section 4 to the northwest corner of said northeast quarter of said Section 4; thence northerly along the western limit of the east half of Section 9 Township 13 Range 6 EPM to the intersection of the southern limit of the north half of the west half of Legal Subdivision 15 of last said Township; thence easterly and northerly along the southern and eastern limits of the north half of the west half of said Legal Subdivision 15 to the intersection of the northern limit of said Section 9; thence easterly along the northern limit of said Section 9 to the northeast corner of said Section 9; thence northerly along the eastern limits of Sections 16, 21, 28 and 33 of last said Township to the intersection of the northern limit of Township 13; thence easterly along the northern limit of said Township 13 to the northeast corner of Section 34 of said Township 13; thence northerly along the eastern limits of Sections 3, 10, 15, 22, 27 and 34 of Township 14 Range 6 EPM to the intersection of the northern limit of said Township 14; thence easterly along the northern limit of said Township

---

14 to the intersection of the straight line production southerly of the eastern limit of Section 1 Township 15 Range 6 EPM; thence northerly along the said straight line production southerly and the eastern limit of Range 6 EPM to the northeast corner of Section 13 of last said Township; thence easterly along the northern limits of Sections 18 to 13 (both inclusive) of Township 15, Ranges 7 EPM and 8 EPM to the intersection of the eastern limit of Range 8 EPM; thence northerly along the eastern limit of said Range 8 EPM to the intersection of the northern limit of Township 15; thence westerly along the northern limit of said Township 15 to the northeast corner of Section 32 Township 15 Range 8 EPM; thence northerly along the eastern limits of Sections 5, 8, 17, 20, 29 and 32 Township 16 Range 8 EPM to the intersection of the northern limit of Township 16; thence westerly along the northern limit of said Township 16 to the northeast corner of Section 34 Township 16 Range 7 EPM; thence northerly along the eastern limits of Sections 3, 10, 15, 22, 27 and 34 Township 17 Range 17 EPM to the northeast corner of last said Section 34; thence northerly along the eastern limits of Sections 3 and 10 Township 18 Range 7 EPM to the northeast corner of last said Section 10; thence westerly along the northern limits of Sections 10 and 9 of last said Township to the northeast corner of Section 8 of last said Township; thence northerly along the eastern limits of Sections 17, 20, 29 and 32 of last said Township to the intersection of the southeastern shore of Lake Winnipeg; thence in generally southerly and westerly directions along the sinuous southeastern shore of Lake Winnipeg to the intersection of the center thread of the Red River; thence in a general southern direction along the said center thread to the point of commencement.

### **Riding Mountain Electoral Division**

All that portion of the Province of Manitoba contained within the following described limits:

Commencing at the intersection of the Manitoba/Saskatchewan boundary and the straight line production westerly of the northern limit of Township 18; thence easterly along the said straight line production and the northern limit of said Township 18 to the intersection of the centre thread of the Assiniboine River; thence in a general southeasterly direction along the said centre thread to the intersection of the southern limit of the west half of Section 34 Township 18 Range 29 WPM; thence easterly along the southern limit of said west half to the intersection of the eastern limit of said west half; thence northerly along the eastern limit of said west half to the intersection of the northern limit of said Township 18; thence easterly along the northern limit of said Township 18 to the eastern limit of Range 23 WPM; thence northerly along the eastern limit of said Range 23 WPM to the intersection of the northern limit of Township 20; thence westerly along the northern limit of said Township 20 to the intersection of the eastern limit of Range 24 WPM; thence northerly along the eastern limit of said Range 24 WPM to the intersection of the northern limit of Township 21; thence westerly along the northern limit of said Township 21 to the intersection of the eastern limit of Range 26 WPM; thence northerly along the eastern limit of said Range 26 WPM to the intersection of the northern limit of Township 22; thence easterly along the northern limit of said Township 22 to the intersection of the eastern limit of Range 18 WPM; thence southerly along the eastern limit of Range 18 WPM to the intersection of the northern limit of Township 21; thence easterly along the northern limit of Township 21 to the northwest corner of the northeast quarter of Section 31 Township 21 Range 16 WPM; thence southerly and easterly along the western and southern limits of the northeast quarter of said Section 31 to the northeast corner of the southeast quarter of said Section 31; thence southerly along the eastern limit of said Section 31 to the northeast corner of Section 30 of last said Township; thence easterly along the northern limits of Sections 29 and 28 of last said Township to the northwest corner of the northeast quarter of said Section 28; thence southerly and easterly along the western and southern limits of the northeast quarter of said Section 28 to the northeast corner of the southeast quarter of said Section 28; thence southerly along the eastern limits of Sections 28 and 21 to the northeast corner of Section 16 of last said Township; thence easterly along the northern limits of sections 15 and 14 of last said Township to the northeast corner of the northwest quarter of said Section 14; thence southerly and westerly along the eastern and southern limits of the northwest quarter of said Section 14 to the northeast corner of the southeast quarter of last said Section 15; thence southerly along the eastern limit of last said Section 15 to the northeast corner of Section 10 of last said Township; thence easterly along the northern limit of Section 11 of last said Township to

---

the northeast corner of the northwest quarter of last said Section 11; thence southerly along the eastern limit of last said northwest quarter to the northwest corner of the southeast quarter of last said Section 11; thence easterly along last said southeast quarter to the intersection of the eastern limit of last said southeast quarter; thence southerly along the eastern limits of said Section 11 and Section 2 of last said Township to the northeast corner of Section 35 Township 20 Range 16 WPM; thence southerly along the eastern limit of said Section 35 to the northeast corner of the southeast quarter of said Section 35; thence easterly and southerly along the northern and eastern limits of the southwest quarter of Section 36 of last said Township to the northwest corner of the east half of Section 25 of last said Township; thence southerly along the western limit of the east half of said Section 25 to the northwest corner of the northeast quarter of Section 24 of last said Township; thence easterly along the northern limit of said Section 24 to the intersection of the eastern limit of Range 16 WPM; thence southerly along the eastern limit of Range 16 WPM to the northeast corner of Section 13 Township 19 Range 16 WPM; thence westerly along the northern limits of Sections 13 to 18 (both inclusive) Township 19 Range 16 WPM to the intersection of the eastern limit of Range 17 WPM; thence southerly along the eastern limit of said Range 17 WPM to the intersection of the northern limit of Township 12; thence westerly along the northern limit of said Township 12 to the intersection of the eastern limit of Range 23 WPM; thence southerly along the eastern limit of said Range 23 WPM to the intersection of the northern limit of Township 9; thence westerly along the northern limit of said Township 9 to the intersection of the centre thread of the Assiniboine River; thence in a general southwesterly direction along the said centre thread to the intersection of the western limit of Section 34 Township 9 Range 23 WPM; thence northerly along the western limit of said Section 34 to the intersection of the northern limit of said Township 9; thence westerly along the northern limit of said Township 9 to the intersection of the eastern limit of Range 26 WPM; of thence southerly along the eastern limit of said Range 26 WPM to the intersection of the northern limit of Township 6; thence westerly along the northern limit of said Township 6 and its straight line production westerly to the intersection of the Manitoba/Saskatchewan boundary; thence northerly along the said Manitoba/Saskatchewan boundary to the point of commencement.

### **Selkirk Electoral Division**

All that portion of the Province of Manitoba contained within the following described limits:

Commencing at the northeast corner of Section 33 Township 17 Range 3 EPM; thence southerly along the eastern limits of Sections 33, 28, 21, 16, 9, and 4 of Townships 17 to 13 (both inclusive) Range 3 EPM to the intersection of the northern limit of Township 12; thence easterly along the northern limit of said Township 12 and its straight line production easterly to the intersection of the western limit of Outer Two Mile Lot 1 Parish of Saint Andrews; thence southerly along the western limit of said Lot 1 to the intersection of southwestern limit of said Lot 1; thence southeasterly along the southwestern limit of said Lot 1 and River Lot 1 of last said Parish and the straight line production southeasterly of said River Lot 1 to the intersection of the centre thread of the Red River; thence in a general northeasterly and northerly direction along the sinuous centre thread of said Red River to the intersection of the southern shore of Lake Winnipeg; thence in a general northwesterly direction along the sinuous southwestern shore of said Lake Winnipeg to the intersection of the southeastern limit of Ralph Avenue Plan 2822 WLTO; thence southwesterly then westerly along the southeastern and southern limits of said Ralph Avenue and its straight line production westerly to the intersection of the centreline of the government road allowance lying between Sections 2 and 3 Township 17 Range 4 EPM; thence southerly along the last said centreline to the intersection of the straight line production easterly of the southern limit of Victoria Avenue Plan 2615 WLTO; thence westerly along the last said straight line production and along the southern limit of said Victoria Avenue to the intersection of the eastern limit of Canadian Pacific Railway Plan 691 WLTO; thence northerly along the eastern limit of said Railway Plan to the intersection of the northern limit of Section 3 of last said Township; thence westerly along the northern limit of last said Section 3 to the northeast corner of Section 4 of last said Township; thence northerly along the eastern limits of Sections 9, 16, 21, and 28 of last said Township to the northeast corner of Section 28 of last said Township; thence westerly along the northern limit of said Section 28 to the northeast corner of the northwest quarter of said Section 28; thence northerly along



---

the western limit of the east half of Section 33 of last said Township to the intersection of the northern limit of Township 17; thence westerly along the northern limit of last said Township to the point of commencement.

### **Springfield-Ritchot Electoral Division**

All that portion of the Province of Manitoba contained within the following described limits:

Commencing at the northeast corner of Section 31 Township 12 Range 6 EPM; thence southerly along the eastern limits of Sections 31, 30, 19, 18, 7 and 6 of Townships 12 to 10 (both inclusive) Range 6 EPM to the intersection of the northern limit of Township 9; thence westerly along the northern limit of said Township 9 to the northeast corner of Section 33 Township 9 Range 4 EPM; thence southerly along the eastern limits of Sections 33, 28, 21, 16, 9 and 4 of Townships 9 and 8 Range 4 EPM to the intersection of the northern limit of Township 7; thence westerly along the northern limit of Township 7 to the intersection of the eastern limit of SP Lot 1 Plan 19178 WLTO; thence southerly and westerly along the eastern and southern limits of said Lot 1 to the southwest corner of said lot 1; thence westerly, southerly and easterly along the northern, western and southern limits of the southwest quarter of Section 32 of last said Township to the southeast corner of said southwest quarter of Section 32; thence southerly along the straight line production southerly of the eastern limit of said southwest quarter of Section 32 to the northeast corner of the north half of the northwest quarter of Section 29 of last said Township; thence southerly and westerly along the eastern and southern limits of said north half to the intersection of the western limit of said Section 29; thence southerly along the western limit of said Section 29 to the intersection of the straight line production easterly of the southern limit of Section 30 Township 7 Range 4 EPM; thence westerly along the last said straight line production and the southern limit of said Section 30 and further along the straight line production westerly of the southern limit of said Section 30 to the intersection of the eastern limit of Range 3 EPM; thence southerly along the eastern limit of said Range 3 EPM and its straight line production southerly to the intersection of the northern limit of the Settlement of Rat River; thence westerly along the northern limit of said settlement and the northern limit of Township 6 to the intersection of the straight line production southerly of the eastern limit of River Lot 538 Parish of Sainte Agathe; thence northerly along the last said straight line production to the southeast corner of said River Lot 538; thence westerly and southerly (an irregular line) along the eastern limit of said Parish to the southeast corner of River Lot 532 of said Parish; thence northwesterly along the southwestern limit of said Lot 532 to the southeast corner of River Lot 530 of said Parish; thence westerly along the southern limits of River Lots 530 and 529 of said Parish to the intersection of the western limit of said Parish; thence in generally northerly and easterly directions (an irregular line) along the western limit of said Parish and its production northerly to the southwest corner of River Lot 2 of the Parish of Saint Norbert; thence in generally northerly and westerly directions (an irregular line) along the western limit of last said Parish to the intersection of the southern limit of the City of Winnipeg; thence in generally northeasterly and northerly directions (an irregular line) along the southern and eastern limits of said City of Winnipeg to the intersection of the southern limit of Outer Two Mile Lot 119 of the Parish of Saint Paul; thence in generally northerly and easterly directions (an irregular line) along the eastern limit of last said Parish and its production northerly to the southeast corner of Outer Two Mile Lot 288 of the Parish of Saint Andrews; thence in generally northerly and easterly directions along the eastern limit of last said Parish to the intersection of the southern limit of Plan 9978 WLTO; thence in generally easterly and northerly directions (an irregular line) along the southern and eastern limits of said Plan 9978 to the intersection of the southwestern limit of Plan 7145 WLTO; thence in generally northerly and easterly directions along the eastern limit of the Parish of Saint Andrews (an irregular line) to the southeast corner of Outer Two Mile Lot 145 of last said Parish; thence southerly along the straight line production southerly of the eastern limit of said Lot 145 to the intersection of the northern limit of Township 12; thence easterly along the northern limit of said Township 12 to the point of commencement.

---

### **Spruce Woods Electoral Division**

All that portion of the Province of Manitoba contained within the following described limits:

Commencing at the northeast corner of Township 12 Range 17 WPM; thence westerly along the northern limit of said Township 12 to the intersection of the eastern limit of Range 23 WPM; thence southerly along the eastern limit of said Range 23 WPM to the intersection of the northern limit of Township 9; thence westerly along the northern limit of said Township 9 to the intersection of the centre thread of the Assiniboine River; thence in a general southwesterly direction along the said centre thread to the intersection of the western limit of Section 34 Township 9 Range 23 WPM; thence northerly along the western limit of said Section 34 to the intersection of the northern limit of said Township 9; thence westerly along the northern limit of said Township 9 to the intersection of the eastern limit of Range 26 WPM; thence southerly along the eastern limit of said Range 26 WPM to the intersection of the northern limit of Township 6; thence easterly along the northern limit of said Township 6 to the intersection of the straight line production southerly of the eastern limit of Section 3 Township 7 Range 10 WPM; thence northerly along the last said straight line production southerly and the eastern limits of Sections 3, 10, 15 and 22 of last said Township to the northeast corner of Section 22 Township 7 Range 10 WPM; thence westerly along the northern limit of said Section 22 to the northeast corner of the northwest quarter of said Section 22; thence northerly along the western limits of the east halves of Sections 27 and 34 of last said Township to the intersection of the northern limit of said Township 7; thence westerly along the northern limit of said Township 7 to the northeast corner of Section 32 of last said Township; thence northerly along the eastern limits of Sections 5, 8, 17, 20, 29 and 32 of Townships 8 and 9 Range 10 WPM to the intersection of the northern limit of said Township 9; thence westerly along the northern limit of said Township 9 to the intersection of the eastern limit of Range 13 WPM; thence southerly along the eastern limit of said Range 13 WPM to the northeast corner of Section 13 Township 9 Range 13 WPM; thence westerly along the northern limits of Sections 13 to 18 (both inclusive) of last said Township to the intersection of the eastern limit of Range 14 WPM; thence northerly along the eastern limit of said Range 14 WPM to the intersection of the northern limit of said Township 9; thence westerly along the northern limit of said Township 9 to the intersection of the eastern limit of Range 17 WPM; thence northerly along the eastern limit of said Range 17 WPM to the point of commencement.

Excepting out of the above described land all that portion of the City of Brandon which lies south of the centre thread of the Assiniboine River.

### **Steinbach Electoral Division**

All that portion of the Province of Manitoba contained within the following described limits:

Commencing at the northeast corner of Section 34 Township 7 Range 5 EPM; thence easterly along the northern limit of Township 7 to the intersection of the eastern limit of Range 6 EPM; thence southerly along the eastern limit of said Range 6 EPM to the northeast corner of Section 12 Township 6 Range 6 EPM; thence westerly along the northern limits of Sections 12 to 7 (both inclusive) of last said Township to the northeast corner of Section 12 Township 6 Range 5 EPM; thence westerly along the northern limit of last said Section 12 to the northeast corner of Section 11 of last said Township; thence northerly along the eastern limits of Sections 14, 23, 26 and 35 of last said Township to the intersection of the northern limit of said Township 6; thence westerly along the northern limit of said Township 6 to the intersection of the straight line production southerly of the eastern limit of Section 3 Township 7 Range 5 EPM; thence northerly along the last said production southerly and eastern limits of Sections 3, 10, 15, 22, 27 and 34 of last said Township to the point of commencement.

---

## **Swan River Electoral Division**

All that portion of the Province of Manitoba contained within the following described limits:

Commencing at the intersection of the parallel 53 degrees north latitude and the Manitoba/Saskatchewan boundary; thence easterly along said parallel to the intersection of the northeastern shore of Lake Winnipegosis; thence in general southeasterly, southerly and northeasterly directions along the sinuous northeastern shore of said Lake Winnipegosis to the intersection of the eastern limit of Parcel E Plan 7565 NLTO; thence northerly along the eastern limit of said Parcel E to the intersection of Provincial Trunk Highway 60; thence in a general easterly direction along said Highway 60 to the intersection of Provincial Trunk Highway 6; thence in a general southerly direction along said Highway 6 to the intersection of the eastern limit of Range 10 WPM; thence southerly along the eastern limit of said Range 10 WPM to the northeast corner of Section 13 Township 32 Range 10 WPM; thence westerly along the northern limits of Sections 13 to 18 (both inclusive) of last said Township to the intersection of the eastern limit of the community of Homebrook – Peonan Point as shown on Plan 20414 filed in the Office of the Director of Surveys; thence northerly, westerly and southerly (an irregular line) along the eastern, northern and western limits of said Plan 20414 to the intersection of the northwestern shore of Lake Manitoba; thence in a general northerly, southerly then northwesterly direction along the sinuous shore of said Lake Manitoba to the intersection of the eastern limit of Range 15 WPM; thence northerly along the eastern limit of said Range 15 WPM to the intersection of the northern limit of Township 35; thence westerly along the northern limit of said Township 35 to a point at the most eastern intersection of the northern limit of Section 33 Township 35 Range 18 WPM and the shore of Lake Winnipegosis; thence in general northerly, southerly then westerly directions along the sinuous shore of said Lake Winnipegosis to the intersection of the northern limit of Township 31 Range 19 WPM; thence westerly along the northern limit of Township 31 to the intersection of the eastern limit of Range 21 WPM; thence southerly along the eastern limit of said Range 21 WPM to the intersection of the northern limit of Township 27; thence westerly along the northern limit of said Township 27 to the intersection of the eastern limit of Range 26 WPM; thence southerly along the eastern limit of said Range 26 WPM to the northeast corner of Section 13 Township 26 Range 26 WPM; thence westerly along the northern limit of said Section 13 to the intersection of the western limit of the east half of said Section 13; thence southerly along the said western limit to the northeast corner of the northwest quarter of Section 12 of last said Township; thence southerly then westerly along the eastern and southern limits of last said northwest quarter to the northeast corner of the south half of Section 11 of last said Township; thence westerly along the northern limit of said south half to the northeast corner of the southeast quarter of Section 10 of last said Township; thence westerly then southerly along the northern and western limits of last said southeast quarter to the northwest corner of the northeast quarter of Section 3 of last said Township; thence southerly then easterly along the western and southern limits of last said northeast quarter to the southeast corner of last said northeast quarter; thence easterly along the northern limits of the south halves of Sections 2 and 1 of last said Township to the intersection of the eastern limit of said Range 26 WPM; thence southerly along the eastern limit of said Range 26 WPM to the intersection of the northern limit of Township 21; thence easterly along the northern limit of said Township 21 to the intersection of the eastern limit of Range 24 WPM; thence southerly along the eastern limit of said Range 24 WPM to the intersection of the northern limit of Township 20; thence easterly along the northern limit of said Township 20 to the intersection of the eastern limit of Range 23 WPM; thence southerly along the eastern limit of said Range 23 WPM and its straight line production southerly to the intersection of the northern limit of Township 18; thence westerly along the northern limit of said Township 18 to the intersection of the eastern limit of the west half of Section 34 Township 18 Range 29 WPM; thence southerly along the said eastern limit to the intersection of the southern limit of said west half; thence westerly along the southern limit of said west half to the intersection of the centre thread of the Assiniboine River; thence in a general northwesterly direction along the said centre thread to the intersection of the northern limit of said Township 18; thence westerly along the northern limit of said Township 18 and its straight line production westerly to the intersection of the Manitoba/Saskatchewan boundary; thence northerly along said Manitoba/Saskatchewan boundary to the point of commencement.

---

## **The Pas-Kameesak Electoral Division**

All that portion of the Province of Manitoba contained within the following described limits:

Commencing at a point at the intersection of the straight line production westerly of the northern limit of Township 63 and the Manitoba/Saskatchewan boundary; thence easterly along said straight line production and the northern limit of Township 63 to the intersection of Provincial Trunk Highway 6; thence in a general southerly direction along said Highway 6 to the intersection of the northern limit of Township 54; thence easterly along the northern limit of said Township 54 to the intersection of the northwestern shore of Lake Winnipeg; thence in a general northeasterly and southeasterly direction along the sinuous northern and eastern shore of said Lake Winnipeg to the intersection of the northern limit of Township 31; thence westerly along the northern limit of said Township 31 to the northeast corner of Section 36 Township 31 Range 5 EPM; thence westerly along the northern limit of said Section 36 and the straight line production westerly to the intersection of the western shore of said Lake Winnipeg; thence in a general southerly direction along the sinuous western shore of said Lake Winnipeg to the intersection of the northern limit of Township 26; thence westerly along the northern limit of said Township 26 to the intersection of the eastern limit of Range 1 WPM; thence southerly along the eastern limit of said Range 1 WPM to the intersection of the northern limit of Township 25; thence westerly along the northern limit of said Township 25 to the intersection of the eastern limit of Range 3 WPM; thence northerly along the eastern limit of said Range 3 WPM to the intersection of the northern limit of Township 26; thence in a westerly direction along the northern limit of said Township 26 to the intersection of the eastern limit of Range 4 WPM; thence southerly along the eastern limit of said Range 4 WPM to the intersection of the northern limit of Township 25; thence westerly along the northern limit of said Township 25 to the intersection of the straight line production southerly of the eastern limit of Section 6 Township 26 Range 5 WPM; thence northerly along the eastern limit of said Section 6 to the northeast corner of said Section 6; thence easterly along the northern limit of Section 5 of last said Township to the northeast corner of said Section 5; thence northerly along the eastern limit of Section 8 of last said Township to the northeast corner of said Section 8; thence westerly along the northern limit of said Section 8 to the northeast corner of Section 7 of last said Township; thence northerly along the eastern limits of Sections 18, 19, 30 and 31 of last said Township to the intersection of the northern limit of Township 26; thence westerly along the northern limit of said Township 26 to the intersection of the straight line production southerly of the eastern limit of Range 6 WPM; thence northerly along the eastern limit of said Range 6 WPM to the intersection of the northern limit of Township 27; thence westerly along the northern limit of said Township 27 to the intersection of the eastern limit of Range 7 WPM; thence northerly along the eastern limit of said Range 7 WPM; to the intersection of the northern limit of Township 28; thence westerly along the northern limit of said Township 28 to the intersection of the eastern limit of Range 8 WPM; thence northerly along the eastern limit of said Range 8 WPM to the intersection of the eastern shore of Lake St. Martin; thence in a general southwesterly and northwesterly direction along the sinuous shore of said Lake St. Martin to the intersection of the southern limit of the Fairford Indian Reserve No. 50; thence in a general westerly then northeasterly direction (an irregular line) along the southern, southwestern and northwestern boundaries of said Fairford Indian Reserve to the intersection of the southern shore of Pineimuta Lake; thence in a general northwesterly, southwesterly, southerly, westerly, northerly and southeasterly direction along the sinuous shore of said Pineimuta Lake to the intersection of the northern limit of said Fairford Indian Reserve; thence easterly, southerly and southeasterly along the northern limit of said Fairford Indian Reserve to the intersection of the western limit of the Little Saskatchewan Indian Reserve No. 48 as shown on Plan No 51149 Canada Land Survey Records; thence in a general northeasterly then easterly direction along the western and northern limits of said Plan to the intersection of the western shore of said Lake St. Martin; thence in a general northeasterly direction along the sinuous shore of said Lake St. Martin to the intersection of the western limit of The Narrows Indian Reserve No. 49; thence in general northerly and easterly directions (an irregular line) along the western and northern limits of said The Narrows Indian Reserve to the intersection of the western shore of said Lake St. Martin; thence in a general northerly direction along the sinuous shore of said Lake St. Martin to the intersection of the northern limit of Fractional Section 10 Township 33 Range 7 WPM; thence westerly along the northern limits of said Fractional Section 10 and Sections 9 to 7 (both inclusive) of last said Township to the northeast corner of Section 12 Township 33 Range 8 WPM; thence

---

westerly along the northern limits of Sections 12 to 7 (both inclusive) of last said Township to the intersection of the eastern limit of Range 9 WPM; thence northerly along the eastern limit of said Range 9 WPM to the intersection of the northern limit of Township 33; thence westerly along the northern limit of said Township 33 to the intersection of the eastern limit of Range 10 WPM; thence southerly along the eastern limit of said Range 10 WPM to the intersection of said Provincial Trunk Highway 6; thence in a general northwesterly direction along said Highway 6 to the intersection of Provincial Trunk Highway 60; thence in a general westerly direction along said Highway 60 to the intersection of the eastern limit of Parcel E Plan 7565 NLTO; thence southerly along the eastern limit of said Parcel E to the intersection of the northeast shore of Lake Winnipegosis; thence in general southwesterly, northerly and northwesterly directions along the sinuous shore of said Lake Winnipegosis to the intersection of the parallel 53 degrees north latitude; thence westerly along said parallel to the intersection of the Manitoba/Saskatchewan boundary; thence northerly along said Manitoba/Saskatchewan boundary to the point of commencement.

### **Thompson Electoral Division**

All that portion of the Province of Manitoba contained within the following described limits:

Commencing at the intersection of the straight line production northerly of the eastern limit of Range 1 WPM and the Manitoba/Nunavut boundary; thence easterly along said Manitoba/Nunavut boundary to the intersection of the western shore of Hudson Bay; thence in a general southeasterly direction along the sinuous western shore of said Hudson Bay to the intersection of the centre thread of the Nelson River; thence in a general southwesterly direction along the said centre thread to the intersection of the eastern limit of Range 2 East of the Second Meridian East; thence southerly along the eastern limit of said Range 2 East to the intersection of the northern limit of Township 86; thence westerly along the northern limit of said Township 86 to the intersection of the eastern limit of Range 22 EPM; thence southerly along the eastern limit of said Range 22 EPM to the intersection of the northern limit of Township 83; thence westerly along the northern limit of Township 83 to the intersection of the eastern limit of Range 16 EPM; thence southerly along the eastern limit of said Range 16 EPM to the intersection of the northern limit of Township 69; thence westerly along the northern limit of said Township 69 to the intersection of the eastern limit of Range 1 WPM; thence southerly along the eastern limit of said Range 1 WPM to the intersection of the northern limit of Township 67; thence westerly along the northern limit of said Township 67 to the intersection of the eastern limit of Range 12 WPM; thence northerly along the eastern limit of said Range 12 WPM to the intersection of the northern limit of Township 84; thence easterly along the northern limit of said Township 84 to the intersection of the eastern limit of said Range 1 WPM; thence northerly along the eastern limit of said Range 1 WPM and its straight line production northerly to the point of commencement.

### **Turtle Mountain Electoral Division**

All that portion of the Province of Manitoba contained within the following described limits:

Commencing at the intersection of the straight line production westerly of the northern limit of Township 6 and the Manitoba/Saskatchewan boundary; thence southerly along the said Manitoba/Saskatchewan boundary to the intersection of the Manitoba/United States boundary; thence easterly along the said Canada/United States boundary to the intersection of the straight line production southerly of the eastern limit of Range 7 WPM; thence northerly along the said straight line production southerly and the eastern limit of said Range 7 WPM to the intersection of the northern limit of said Township 3; thence westerly along the northern limit of said Township 3 to the intersection of the eastern limit of Range 8 WPM; thence northerly along the eastern limit of said Range 8 WPM to the intersection of the northern limit of Township 6; thence westerly along the northern limit of said Township 6 to the intersection of the straight line production southerly of the western limit of

---

the east half of the southwest quarter of Section 6 Township 7 Range 8 WPM; thence northerly along the last said production southerly and the western limit of the east half of said southwest quarter of Section 6 to the intersection of the northern limit of said southwest quarter Section 6; thence westerly along the northern limit of said southwest quarter Section 6 to the northeast corner of the southeast quarter of Section 1 Township 7 Range 9 WPM; thence westerly along the northern limit of the south half of last said Section 1 to the northeast corner of the west half of the southwest quarter of last said Section 1; thence southerly along the eastern limit of the said west half and its straight line production southerly to the intersection of the northern limit of said Township 6; thence westerly along the northern limit of said Township 6 and its straight line production westerly to the point of commencement.

---

## Legal Descriptions for Electoral Divisions inside of Winnipeg

### **Assiniboia Electoral Division**

All that portion of the City of Winnipeg contained within the following described limits:

Commencing at a point at the intersection of the western limit of the City of Winnipeg and Portage Avenue; thence northerly and easterly (an irregular line) along the western and northern limits of said City of Winnipeg to the northwest corner of Parcel A Plan 34260 WLTO; thence southerly along the western limit of said Plan and its production southerly to the intersection of Saskatchewan Avenue; thence easterly along said Saskatchewan Avenue to the intersection of Moray Street; thence southerly along said Moray Street to the intersection of Ness Avenue; thence westerly along said Ness Avenue to the intersection of Sturgeon Road; thence southerly along said Sturgeon Road to the intersection of said Portage Avenue; thence westerly along said Portage Avenue to the point of commencement.

### **Burrows Electoral Division**

All that portion of the City of Winnipeg contained within the following described limits:

Commencing at a point at the intersection of the Arborg Subdivision of the Canadian Pacific Railway and Adsum Drive; thence easterly along Adsum Drive to the intersection of Jefferson Avenue; thence southeasterly along Jefferson Avenue to the intersection of McPhillips Street; thence southwesterly along McPhillips Street to the intersection of Inkster Boulevard; thence southeasterly along Inkster Boulevard to the intersection of Arlington Street; thence southwesterly along Arlington Street to the intersection of the Carberry Subdivision of the Canadian Pacific Railway; thence northwesterly along said Carberry Subdivision to the intersection of Keewatin Street; thence northerly along Keewatin Street to the intersection of Selkirk Avenue; thence southeasterly along Selkirk Avenue to the intersection of the Arborg Subdivision of the Canadian Pacific Railway; thence northwesterly along said Arborg Subdivision to the point of commencement.

### **Concordia Electoral Division**

All that portion of the City of Winnipeg contained within the following described limits:

Commencing at a point at the intersection of Raleigh Street and McLeod Avenue; thence southeasterly along McLeod Avenue to the intersection of Molson Street; thence southwesterly along Molson Street and Panet Road to the intersection of Regent Avenue West; thence southeasterly along Regent Avenue West to the intersection of Lagimodière Boulevard; thence southwesterly along Lagimodière Boulevard to the intersection of the Redditt Subdivision of the Canadian National Railway; thence northwesterly along said Redditt Subdivision to the intersection of the Emerson Subdivision of the Canadian Pacific Railway; thence northerly and northwesterly along said Emerson Subdivision to the intersection of the Keewatin Subdivision of the Canadian Pacific Railway; thence easterly along said Keewatin Subdivision to the intersection of the straight line production southwesterly of Raleigh Street; thence northeasterly along said straight line production and Raleigh Street to the point of commencement.

### **Elmwood Electoral Division**

All that portion of the City of Winnipeg contained within the following described limits:

Commencing at a point at the intersection of the centre thread of the Red River and the Keewatin Subdivision of the Canadian Pacific Railway; thence in a general northerly direction along said centre thread to the

---

intersection of the straight line production northwesterly of Rossmere Crescent; thence southeasterly along said straight line production and Rossmere Crescent to the intersection of the straight line production northwesterly of the southwestern limit of Lot 21 Block 5 Plan 5256 WLTO; thence southeasterly along the last said straight line production and the southwestern limit of said Lot 21 and its straight line production southeasterly to the intersection of Henderson Highway; thence northeasterly along said Henderson Highway to the intersection of McLeod Avenue; thence southeasterly along McLeod Avenue to the intersection of Roch Street; thence southwesterly along Roch Street to the intersection of the straight line production northwesterly of the southern limit of River Lot 75 of the Parish of Kildonan; thence southeasterly along the last said straight line production and the southern limit of said River Lot 75 to the intersection of the northwestern limit of Lot 41 Block 1 Plan 7059 WLTO; thence southwesterly along the northwestern limit of said Lot 41 to the southwest corner of said Lot 41; thence southeasterly along the southern limit of said Lot 41 and Lot 42 Block 1 Plan 7059 WLTO and its straight line production southeasterly to the intersection of Raleigh Street; thence southwesterly along Raleigh Street and its straight line production southwesterly to the intersection of said Keewatin Subdivision; thence westerly along said Keewatin Subdivision to the point of commencement.

### **Fort Garry Electoral Division**

All that portion of the City of Winnipeg contained within the following described limits:

Commencing at the intersection of Corydon Avenue and Stafford Street; thence southeasterly along Stafford Street to the intersection of Grant Avenue; thence southwesterly along Grant Avenue to the intersection of Cambridge Street; thence southerly along Cambridge Street to the intersection of Poseidon Bay; thence southeasterly along Poseidon Bay to the intersection of Taylor Avenue; thence westerly along Taylor Avenue to the intersection of Waverley Street; thence southerly along Waverley Street to the intersection of Bishop Grandin Boulevard; thence northeasterly along Bishop Grandin Boulevard to the intersection of Pembina Highway; thence southerly along Pembina Highway to the intersection of the straight line production of the northwestern limit of Lot 1 Plan 22535 WLTO; thence northeasterly along said straight line production and the northwestern limit of said Lot 1 and its straight line production northeasterly to the intersection of the northwestern limit of Lot 2 of said Plan 22535; thence northeasterly along the northwestern limit of said Lot 2 and its straight line production northeasterly to the intersection of the centre thread of the Red River; thence in a general northerly direction along said centre thread of the Red River to the intersection of the straight line production southeasterly of Riverdale Street; thence northwesterly along the last said straight line production and Riverdale Street to the intersection of Jubilee Avenue; thence southwesterly along Jubilee Avenue to the intersection of Pembina Highway; thence northeasterly along Pembina Highway to the intersection of Corydon Avenue; thence southwesterly along Corydon Avenue to the point of commencement.

### **Fort Richmond Electoral Division**

All that portion of the City of Winnipeg contained within the following described limits:

Commencing at a point at the intersection of Waverley Street and Bison Drive; thence easterly along Bison Drive to the intersection of Pembina Highway; thence northeasterly along Pembina Highway to the intersection of the straight line production southwesterly of the northwestern limit of Lot 1 Plan 22535 WLTO; thence northeasterly along the said straight line production and the northwestern limit of said Lot 1 and its straight line production northeasterly to the intersection of the northwestern limit of Lot 2 of said Plan 22535; thence northeasterly along the northwestern limit of said Lot 2 and its straight line production northeasterly to the intersection of the centre thread of the Red River; thence in a general southerly direction along said centre thread of the Red River to the intersection of the Perimeter Highway; thence in a southwesterly direction along the Perimeter Highway to the intersection of the straight line production southerly of Shahi Street; thence northerly along the last said straight line production southerly and Shahi Street and its straight line production northerly to the intersection of Waverley Street; thence northerly along Waverley Street to the point of commencement.



---

### **Fort Rouge Electoral Division**

All that portion of the City of Winnipeg contained within the following described limits:

Commencing at the intersection of Arbutnot Street and Corydon Avenue; thence northeasterly along Corydon Avenue to the intersection of Pembina Highway; thence southwesterly along Pembina Highway to the intersection of Jubilee Avenue; thence northeast along Jubilee Avenue to the intersection of Riverdale Street; thence southeasterly along Riverdale Street and its straight line production southeasterly to the intersection of the centre thread of the Red River; thence in a general northerly direction along the centre thread of the Red River to the intersection of the centre thread of the Assiniboine River; thence in a general westerly direction along the center thread of the Assiniboine River to the intersection of the straight line production northeasterly of the northwestern limit of Parcel A Plan 19453 WLTO; thence in a southwesterly direction along said straight line production northeasterly and the northwestern limit of said Parcel A and its production southwesterly to the intersection of Wellington Crescent; thence southeasterly along Wellington Crescent to the intersection of Grosvenor Avenue; thence southwesterly along Grosvenor Avenue to the intersection of Arbutnot Street; thence southeasterly along Arbutnot Street to the point of commencement.

### **Fort Whyte Electoral Division**

All that portion of the City of Winnipeg contained within the following described limits:

Commencing at the intersection of McCreary Road and the Rivers Subdivision of the Canadian National Railway; thence northeasterly along said Rivers Subdivision to the intersection of Waverley Street; thence southerly along Waverley Street to the intersection of Bishop Grandin Boulevard; thence southwesterly along Bishop Grandin and its straight line production southwesterly to the intersection of the western limit of the City of Winnipeg; thence northerly and westerly along said western limit to the intersection of McCreary Road; thence northerly along McCreary Road to the point of commencement.

### **Kildonan–River East Electoral Division**

All that portion of the City of Winnipeg contained within the following described limits:

Commencing at a point at the intersection of the northeastern limit of the City of Winnipeg and the Winnipeg Beach Subdivision of the Canadian Pacific Railway; thence southeasterly (an irregular line) along the said northeastern limit to the intersection of the straight line production northeasterly of Gateway Road; thence southwesterly along said production northeasterly and Gateway Road to the intersection of Chief Peguis Trail; thence northwesterly along Chief Peguis Trail to the intersection of Henderson Highway; thence southwesterly along Henderson Highway to the intersection of the straight line production southeasterly of the southwestern limit of Lot 21 Block 5 Plan 5256 WLTO; thence northwesterly along last said straight line production and the southwestern limit of said Lot 21 and its straight line production northwesterly to the intersection of Rossmere Crescent; thence northwesterly along Rossmere Crescent and its straight line production northwesterly to the intersection of the centre thread of the Red River; thence in a general northeasterly direction along said centre thread to the intersection of the straight line production southeasterly of the northeast limit of Parcel B Plan 6729 WLTO; thence northwesterly along last said straight line production and last said northeast limit to the intersection of Scotia Street; thence northeasterly along Scotia Street to the intersection of Leila Avenue; thence northwesterly along Leila Avenue to the intersection of Main Street; thence northeasterly along Main Street to the intersection of Highland Avenue; thence northwesterly along Highland Avenue and the straight line production northwesterly of said Highland Avenue to the intersection of said Winnipeg Beach Subdivision; thence northeasterly along said Winnipeg Beach Subdivision to the point of commencement.

---

### **Kirkfield Park Electoral Division**

All that portion of the City of Winnipeg contained within the following described limits:

Commencing at a point at the intersection of Portage Avenue and the western limit of the City of Winnipeg; thence southerly along said western limit of the City of Winnipeg to intersection of the centre thread of the Assiniboine River; thence in a general easterly direction along the sinuous centre thread of said Assiniboine River to the intersection of the straight line production southerly of Conway Street; thence northerly along said straight line production to the intersection of said Portage Avenue; thence westerly along said Portage Avenue to the intersection of Mount Royal Road; thence northerly along said Mount Royal Road to the intersection of Ness Avenue; thence westerly along said Ness Avenue to the intersection of Sturgeon Road; thence southerly along said Sturgeon Road to the intersection of said Portage Avenue; thence westerly along said Portage Avenue to the point of commencement.

### **Lagimodière Electoral Division**

All that portion of the City of Winnipeg contained within the following described limits:

Commencing at a point at the intersection of Bishop Grandin Boulevard and St. Anne's Road; thence easterly along Bishop Grandin Boulevard to the intersection of Lagimodière Boulevard; thence northerly along Lagimodière Boulevard to the intersection of the straight line production westerly of the southern limit of Plan 3364 WLTO; thence easterly along the said production westerly and the southern limit of said Plan 3364 to the intersection of the eastern limit of the City of Winnipeg; thence southerly, westerly and southwesterly along said eastern limit to the intersection of the centre thread of the Seine River; thence in a general northwesterly direction along said centre thread to the intersection of the Perimeter Highway; thence southwesterly along the Perimeter Highway to the intersection of St. Anne's Road; thence northwesterly along St. Anne's Road to the point of commencement.

### **McPhillips Electoral Division**

#### Parcel 1:

All that portion of the Province of Manitoba contained within the following described limits:

Commencing at the northeast corner of Township 12 Range 2 EPM; thence easterly along the northern limit of Township 12 and its straight line production easterly to the intersection of the western limit of Outer Two Mile Lot 1 Parish of Saint Andrews; thence southerly along the western limit of said Lot 1 to the intersection of the southwestern limit of said Lot 1; thence southeasterly along the southwestern limit of said Lot 1 and River Lot 1 of last said Parish and the straight line production southeasterly of last said Lot 1 to the intersection of the centre thread of the Red River; thence in a general southwesterly direction along the sinuous centre thread of said Red River to the intersection of the straight line production southeasterly of the northeastern limit of River Lot 38 Parish of Kildonan; thence in general northwesterly and westerly directions (an irregular line) along the northern limit of the City of Winnipeg to the intersection of the eastern limit of Range 2 EPM; thence northerly along the eastern limit of said Range 2 EPM to the point of commencement.

#### Parcel 2:

All that portion of the City of Winnipeg which lies north of the following described boundary:

Commencing at the intersection of the northern limit of the City of Winnipeg and the Winnipeg Beach Subdivision of the Canadian Pacific Railway; thence southwesterly along said Winnipeg Beach Subdivision to the intersection of the straight line production northwesterly of Highland Avenue; thence southeasterly along said

---

straight line production and Highland Avenue to the intersection of Main Street; thence southerly along Main Street to the intersection of Leila Avenue; thence northwesterly along Leila Avenue to the intersection of said Winnipeg Beach Subdivision; thence southwesterly along said Winnipeg Beach Subdivision to the intersection of Inkster Boulevard; thence northwesterly along Inkster Boulevard to the intersection of McPhillips Street; thence northeasterly along McPhillips Street to the intersection of said Leila Avenue; thence northwesterly along said Leila Avenue to the intersection of Pipeline Road; thence northerly along Pipeline Road to the intersection of the northern limit of the City of Winnipeg.

### **Notre Dame Electoral Division**

All that portion of the City of Winnipeg contained within the following described limits:

Commencing at a point at the intersection of the western limit of the City of Winnipeg and the Carberry Subdivision of the Canadian Pacific Railway; thence southerly along said western limit to the intersection of Notre Dame Avenue; thence easterly then southeasterly along Notre Dame Avenue to the intersection of Erin Street; thence southerly along said Erin Street to the intersection of Sargent Avenue; thence easterly along said Sargent Avenue to the intersection of Maryland Street; thence northerly along said Maryland Street to the intersection of said Notre Dame Avenue; thence southeasterly along said Notre Dame Avenue to the intersection of Isabel Street; thence northerly along said Isabel Street and the Slaw Rebchuk Bridge to the intersection of said Carberry Subdivision; thence northwesterly along said Carberry Subdivision to the point of commencement.

### **Point Douglas Electoral Division**

All that portion of the City of Winnipeg contained within the following described limits:

Commencing at a point at the intersection of the Carberry Subdivision of the Canadian Pacific Railway and the Arlington Street Viaduct; thence northeasterly along said Viaduct and Arlington Street to the intersection of Church Avenue; thence southeasterly along Church Avenue to the intersection of Main Street; thence southwesterly along Main Street to the intersection of Redwood Avenue; thence southeasterly along Redwood Avenue to the intersection of the centre thread of the Red River; thence in a general southerly direction along said centre thread to the intersection of the Redditt Subdivision of the Canadian National Railway; thence southwesterly along said Redditt Subdivision to the intersection of Pioneer Avenue; thence westerly along Pioneer Avenue to the intersection of Westbrook Street, thence northeasterly along Westbrook Street to the intersection of Portage Avenue East; thence westerly along Portage Avenue East and Portage Avenue to the intersection of Notre Dame Avenue; thence northwesterly along Notre Dame Avenue to the intersection of Isabel Street; thence northeasterly along Isabel Street and the Slaw Rebchuk Bridge to the intersection of the Carberry Subdivision of the Canadian Pacific Railway; thence northwesterly along said Carberry Subdivision to the point of commencement.

### **Radisson Electoral Division**

All that portion of the City of Winnipeg contained within the following described limits:

Commencing at a point at the intersection of Molson Street and Grassie Boulevard; thence easterly and southeasterly along Grassie Boulevard and its straight line production southeasterly to the intersection of the eastern limit of the City of Winnipeg; thence southerly and easterly along said eastern limit to the intersection of the straight line production northerly of the eastern limit of Lot 4 Plan 20840 WLTO; thence southerly along said straight line production northerly and the eastern limit of said Lot 4 and its production southerly to the

---

intersection of the Pine Falls Subdivision of the Central Manitoba Railway; thence northeasterly along said Pine Falls Subdivision to the intersection of Day Street; thence southerly along Day Street to the intersection of Kildare Avenue West; thence westerly along Kildare Avenue West to the intersection of Hoka Street; thence southerly along Hoka Street to the intersection of Rosseau Avenue West; thence westerly along Rosseau Avenue West to the intersection of Plessis Road; thence southerly along Plessis Road to the intersection of Dugald Road; thence westerly along Dugald Road to the intersection of Lagimodière Boulevard; thence northeasterly along Lagimodière Boulevard to the intersection of Regent Avenue West; thence northwesterly along Regent Avenue West to the intersection of Panet Road; thence northeasterly along Panet Road and Molson Street to the point of commencement.

### **Riel Electoral Division**

All that portion of the City of Winnipeg contained within the following described limits:

Commencing at a point at the intersection of the centre thread of the Red River and Bishop Grandin Boulevard; thence northeasterly along Bishop Grandin Boulevard to the intersection of St. Anne's Road; thence southeasterly along St. Anne's Road to the intersection of Southglen Boulevard; thence southwesterly along Southglen Boulevard to the intersection of Dakota Street; thence southerly along Dakota Street to the intersection of Warde Avenue; thence southwesterly along Warde Avenue to the intersection of St. Mary's Road; thence southerly along St. Mary's Road to the intersection of the straight line production northeasterly of the southern limit of Lot 6 Plan 20294 WLTO; thence southwesterly along said straight line production, the southern limit of said Lot 6 and its straight line production southwesterly to the intersection of the centre thread of the Red River; thence in a general northerly direction along said centre thread to the point of commencement.

### **River Heights Electoral Division**

All that portion of the City of Winnipeg contained within the following described limits:

Commencing at a point at the intersection of the La Riviere Subdivision of the Canadian Pacific Railway and the centre thread of the Assiniboine River; thence in a general easterly direction along said centre thread to the intersection of the straight line production northeasterly of the northwestern limit of Parcel A Plan 19453 WLTO; thence in a southwesterly direction along said straight line production northeasterly and the northwestern limit of said Parcel A and its production southwesterly to the intersection of Wellington Crescent; thence southeasterly along Wellington Crescent to the intersection of Grosvenor Avenue; thence southwesterly along Grosvenor Avenue to the intersection of Arbuthnot Street; thence southeasterly along Arbuthnot Street to the intersection of Corydon Avenue; thence southwesterly along Corydon Avenue to the intersection of Stafford Street; thence southeasterly along Stafford Street to the intersection of Grant Avenue; thence southwesterly along Grant Avenue to the intersection of Cambridge Street; thence southerly along Cambridge Street to the intersection of Poseidon Bay; thence southeasterly along Poseidon Bay to the intersection of Taylor Avenue; thence westerly along Taylor Avenue to the intersection of Waverley Street; thence southerly along Waverley Street to the intersection of the Rivers Subdivision of the Canadian National Railway; thence westerly along said Rivers Subdivision to the intersection of the La Riviere Subdivision of the Canadian Pacific Railway; thence northerly along said La Riviere Subdivision to the point of commencement

### **Roblin Electoral Division**

#### Parcel 1:

All that portion of the Province of Manitoba contained within the following described limits:

Commencing at the intersection of the western limit of the City of Winnipeg and the southern limit of Outer Two Mile Lot 83 of the Parish of Saint Charles; thence westerly along the southern limit of the Parish of Saint

---

Charles and its straight line production westerly to the southeast corner of Outer Two Mile Lot 1 of the Parish of Headingley; thence westerly along the southern limit of the said Parish of Headingley and its straight line production westerly to the southeast corner of River Lot 1 of the Parish of Saint Francois Xavier; thence northerly along the eastern limit of said River Lot 1 and the eastern limits of River Lot 227 and Outer Two Mile lot 227 of last said Parish to the intersection of the straight line production westerly of the northern limit of said Parish of Headingley; thence easterly along last said straight line production westerly and the northern limits of the outer two miles of the Parish of Headingley and the Parish of Saint Charles to the intersection of the western limit of the City of Winnipeg; thence in a general southerly direction (an irregular line) along the western limit of said City of Winnipeg to the point of commencement.

Parcel 2:

All that portion of the City of Winnipeg which lies south and west of the following described boundary:

Commencing at the intersection of the centre thread of the Assiniboine River and the western limit of the City of Winnipeg; thence in a general easterly direction along the sinuous centre thread of said Assiniboine River to the intersection of the Charleswood Bridge; thence southerly along said Charleswood Bridge and William R. Clement Parkway to the intersection of Roblin Boulevard; thence easterly along Roblin Boulevard to the intersection of Laxdal Road; thence southerly along Laxdal Road to the intersection of Ridgewood Avenue; thence easterly along Ridgewood Avenue and its straight line production easterly to the intersection of the Rivers Subdivision of the Canadian National Railway; thence easterly along said Rivers Subdivision to the intersection of McCreary Road; thence southerly along said McCreary Road to the intersection of the southwestern limit of the City of Winnipeg.

**Rossmere Electoral Division**

All that portion of the City of Winnipeg contained within the following described limits:

Commencing at the intersection of Henderson Highway and McLeod Avenue; thence southeasterly along McLeod Avenue to the intersection of Roch Street; thence southwesterly along Roch Street to the intersection of the straight line production northwesterly of the southern limit of River Lot 75 of the Parish of Kildonan; thence southeasterly along the southern limit of said River Lot 75 to the intersection of the northwestern limit of Lot 41 Block 1 Plan 7059 WLTO; thence southwesterly along the northwestern limit of said Lot 41 to the southwest corner of said Lot 41; thence southeasterly along said straight line production and the southern limit of said Lot 41 and Lot 42 Block 1 Plan 7059 WLTO and its straight line production southeasterly to the intersection of Raleigh Street; thence northeasterly along Raleigh Street to the intersection of said McLeod Avenue; thence southeasterly along McLeod Avenue to the intersection of Molson Street; thence southwesterly along Molson Street to the intersection of Grassie Boulevard; thence easterly and southeasterly and its production southeasterly along Grassie Boulevard to the intersection of the eastern limit of the City of Winnipeg; thence northerly, easterly and northwesterly along the eastern and northeastern limits of said City of Winnipeg to the intersection of the straight line production northeasterly of Gateway Road; thence southwesterly along last said straight line production and Gateway Road to the intersection of Chief Peguis Trail; thence northwesterly along Chief Peguis Trail to the intersection of said Henderson Highway; thence southwesterly along said Henderson Highway to the point of commencement.

**Seine River Electoral Division**

All that portion of the City of Winnipeg contained within the following described limits:

Commencing at a point at the intersection of the western limit of the City of Winnipeg and the Perimeter Highway; thence southerly, northeasterly and northerly (an irregular line) along the limit of the City of Winnipeg to the most northerly intersection of the centre thread of the Seine River; thence in a general northwesterly

---

direction along said centre thread to the intersection of the said Perimeter Highway; thence southwesterly along the said Perimeter Highway to the intersection of St. Anne's Road; thence northwesterly along St. Anne's Road to the intersection of Southglen Boulevard; thence southwesterly along Southglen Boulevard to the intersection of Dakota Street; thence southerly along Dakota Street to the intersection of Warde Avenue; thence southwesterly along Warde Avenue to the intersection of St. Mary's Road; thence southerly along St. Mary's Road to the intersection of the straight line production northeasterly of the southern limit of Lot 6 Plan 20294 WLTO; thence southwesterly along said straight line production, the southern limit of said Lot 6 and its straight line production southwesterly to the intersection of the centre thread of the Red River; thence in a general southwesterly direction along last said centre thread to the intersection of the Perimeter Highway; thence southwesterly along the Perimeter Highway to the point of commencement.

### **Southdale Electoral Division**

All that portion of the City of Winnipeg contained within the following described limits:

Commencing at a point at the intersection of the centre thread of the Seine River and the straight line production westerly of the northern limit of Lot 316 RCMP; thence easterly along said straight line production, the northern limit of said Lot 316 and its straight line production easterly to the intersection of the northern limit of Lot 312 RCMP; thence easterly along the northern limits of Lots 312, 306, 298 and 291 RCMP and its straight line production easterly to the intersection of Lagimodière Boulevard; thence southeasterly along Lagimodière Boulevard to the intersection of Fermor Avenue; thence easterly along Fermor Avenue to the intersection of the eastern limit of the City of Winnipeg; thence southerly along said eastern limit to the intersection of the southern limit of Plan 3364 WLTO; thence westerly along the southern limit of said Plan 3364 and its straight line production westerly to the intersection of said Lagimodière Boulevard; thence southerly along Lagimodière Boulevard to the intersection of Bishop Grandin Boulevard; thence westerly along Bishop Grandin Boulevard to the intersection of the centre thread of the Seine River; thence in a general northerly direction along said centre thread to the point of commencement.

### **St. Boniface Electoral Division**

All that portion of the City of Winnipeg contained within the following described limits:

Commencing at a point at the intersection of the centre thread of the Red River and the Keewatin Subdivision of the Canadian Pacific Railway; thence in a general southerly direction along said centre thread to the intersection of the straight line production westerly of the southern limit of Lot 38 Plan 4286 WLTO; thence easterly along the said straight line production and the southern limit of said Lot 38 and its straight line production easterly to the intersection of the southern limit of Lot 37 of said Plan; thence easterly along the southern limit of said Lot 37 and its straight line production easterly to the intersection of St. Mary's Road; thence southerly along St. Mary's Road to the intersection of Fermor Avenue; thence northeasterly along Fermor Avenue to the intersection of the centre thread of the Seine River; thence in a general northerly direction along last said centre thread to the straight line production westerly of the northern limit of Lot 316 RCMP; thence easterly along said straight line production, the northern limit of said Lot 316 and its straight line production easterly to the intersection of the northern limit of Lot 312 RCMP; thence easterly along the northern limits of Lots 312, 306, 298 and 291 RCMP and its straight line production easterly to the intersection of Lagimodière Boulevard; thence northerly along Lagimodière Boulevard to the intersection of the Redditt Subdivision of the Canadian National Railway; thence northwesterly along said Redditt Subdivision to the intersection of the Emerson Subdivision of the Canadian Pacific Railway; thence northerly and northwesterly along said Emerson Subdivision to the intersection of said Keewatin Subdivision; thence westerly along said Keewatin Subdivision to the point of commencement.

---

### **St. James Electoral Division**

All that portion of the City of Winnipeg contained within the following described limits:

Commencing at the northwest corner of Parcel A Plan 34260 WLTO; thence easterly along the northern limit of the City of Winnipeg to the intersection of Notre Dame Avenue; thence easterly then southeasterly along Notre Dame Avenue to the intersection of Erin Street; thence southerly along said Erin Street to the intersection of Portage Avenue; thence westerly along said Portage Avenue to intersection of the La Riviere Subdivision of the Canadian Pacific Railway; thence southerly along said La Riviere Subdivision to the intersection of the centre thread of the Assiniboine River; thence in a general westerly direction along said centre thread to the intersection of the straight line production southerly of Conway Street; thence northerly along said straight line production to the intersection of said Portage Avenue; thence westerly along said Portage Avenue to the intersection of Mount Royal Road; thence northerly along said Mount Royal Road to the intersection of Ness Avenue; thence westerly along said Ness Avenue to the intersection of Moray Street; thence northerly along Moray Street to the intersection of Saskatchewan Avenue; thence westerly along Saskatchewan Avenue to the intersection of the straight line production southerly of the western limit of said Parcel A; thence northerly along last said straight line production and the western limit of said Parcel A to the point of commencement.

### **St. Johns Electoral Division**

All that portion of the City of Winnipeg contained within the following described limits:

Commencing at a point at the intersection of Church Avenue and Arlington Street; thence southeasterly along Church Avenue to the intersection of Main Street; thence southwesterly along Main Street to the intersection of Redwood Avenue; thence southeasterly along Redwood Avenue to the intersection of the centre thread of the Red River; thence in a general northeasterly direction along said centre thread to the intersection of the straight line production southeasterly of the northeast limit of Parcel B Plan 6729 WLTO; thence northwesterly along said straight line production and said northeast limit to the intersection of Scotia Street; thence northeasterly along Scotia Street to the intersection of Leila Avenue; thence northwesterly along Leila Avenue to the intersection of the Winnipeg Beach Subdivision of the Canadian Pacific Railway; thence southwesterly along said Winnipeg Beach Subdivision to the intersection of Inkster Boulevard; thence southeasterly along Inkster Boulevard to the intersection of Arlington Street; thence southwesterly along Arlington Street to the point of commencement.

### **St. Vital Electoral Division**

All that portion of the City of Winnipeg contained within the following described limits:

Commencing at a point at the intersection of Bishop Grandin Boulevard and the intersection of the centre thread of the Red River; thence in a general northerly direction along said centre thread to the intersection of the straight line production westerly of the southern limit of Lot 38 Plan 4286 WLTO; thence easterly along the said straight line production and the southern limit of said Lot 38 and its straight line production easterly to the intersection of the southern limit of Lot 37 of said plan; thence easterly along the southern limit of said Lot 37 to the intersection of St. Mary's Road; thence southerly along St. Mary's Road to the intersection of Fermor Avenue; thence northeasterly along Fermor Avenue to the intersection of the centre thread of the Seine River; thence in a general southerly direction along last said centre thread to the intersection of Bishop Grandin Boulevard; thence southwesterly along Bishop Grandin Boulevard to the point of commencement.

### **The Maples Electoral Division**

All that portion of the City of Winnipeg contained within the following described limits:

Commencing at a point at the intersection of the western limit of the City of Winnipeg and Mollard Road;

---

thence easterly along Mollard Road to the intersection of Pipeline Road; thence southerly along Pipeline Road to the intersection of Leila Avenue; thence southeasterly along Leila Avenue to the intersection of McPhillips Street; thence southwesterly along McPhillips Street to the intersection of Jefferson Avenue; thence northwesterly along Jefferson Avenue to the intersection of Adsum Drive; thence westerly along Adsum Drive to the intersection of the Arborg Subdivision of the Canadian Pacific Railway; thence northwesterly along said Arborg Subdivision to the intersection of said Jefferson Avenue; thence westerly along said Jefferson Avenue to the intersection of the western limit of the City of Winnipeg; thence northerly along said western limit to the point of commencement.

### **Transcona Electoral Division**

All that portion of the City of Winnipeg contained within the following described limits:

Commencing at a point at the intersection of the eastern limit of the City of Winnipeg and the straight line production northerly of the eastern limit of Lot 4 Plan 20840 WLTO; thence southerly along said straight line production northerly and the eastern limit of said Lot 4 and its production southerly to the intersection of the Pine Falls Subdivision of the Central Manitoba Railway; thence northeasterly along said Pine Falls Subdivision to the intersection of Day Street; thence southerly along Day Street to the intersection of Kildare Avenue West; thence westerly along Kildare Avenue West to the intersection of Hoka Street; thence southerly along Hoka Street to the intersection of Rosseau Avenue West; thence westerly along Rosseau Avenue West to the intersection of Plessis Road; thence southerly along Plessis Road to the intersection of Dugald Road; thence westerly along Dugald Road to the intersection of Lagimodière Boulevard; thence southerly along Lagimodière Boulevard to the intersection of Fermor Avenue; thence easterly along Fermor Avenue to the intersection of said eastern limit of the City of Winnipeg; thence northerly, easterly, northerly and westerly (an irregular line) along said eastern limit to the point of commencement.

### **Tuxedo Electoral Division**

All that portion of the City of Winnipeg contained within the following described limits:

Commencing at a point at the intersection of the centre thread of the Assiniboine River and Charleswood Bridge; thence southerly along said Charleswood Bridge and William R. Clement Parkway to the intersection of Roblin Boulevard; thence easterly along Roblin Boulevard to the intersection of Laxdal Road; thence southerly along Laxdal Road to the intersection of Ridgewood Avenue; thence easterly along Ridgewood Avenue and its straight line production easterly to the intersection of the Rivers Subdivision of the Canadian National Railway; thence easterly along said Rivers Subdivision to the intersection of the La Riviere Subdivision of the Canadian Pacific Railway; thence northerly along said La Riviere Subdivision to the intersection of the center thread of the Assiniboine River; thence in a general westerly direction along said center thread to the point of commencement

### **Tyndall Park Electoral Division**

All that portion of the City of Winnipeg contained within the following described limits:

Commencing at a point at the intersection of the western limit of the City of Winnipeg and Jefferson Avenue; thence southerly along said western limit to the intersection of the Carberry Subdivision of the Canadian Pacific Railway; thence southeasterly along said Carberry Subdivision to the intersection of Keewatin Street; thence northerly along Keewatin Street to the intersection of Selkirk Avenue; thence southeasterly along Selkirk Avenue to the intersection of the Arborg Subdivision of the Canadian Pacific Railway; thence northwesterly along said Arborg Subdivision to the intersection of Jefferson Avenue; thence westerly along Jefferson Avenue to the point of commencement.



---

### **Union Station Electoral Division**

All that portion of the City of Winnipeg contained within the following described limits:

Commencing at a point at the intersection of Maryland Street and Notre Dame Avenue; thence southerly along Maryland Street to the intersection of Broadway; thence easterly along Broadway to the intersection of Osborne Street North; thence southerly along Osborne Street North to the intersection of the centre thread of the Assiniboine River; thence in a general easterly direction along said centre thread to the intersection of the centre thread of the Red River; thence in a general northerly direction along last said centre thread to the intersection of the Redditt Subdivision of the Canadian National Railway; thence southwesterly along said Redditt Subdivision to the intersection of Pioneer Avenue; thence westerly along Pioneer Avenue to the intersection of Westbrook Street, thence northeasterly along Westbrook Street to the intersection of Portage Avenue East; thence westerly along Portage Avenue East and Portage Avenue to the intersection of Notre Dame Avenue; thence northwesterly along Notre Dame Avenue to the point of commencement.

### **Waverley Electoral Division**

All that portion of the City of Winnipeg contained within the following described limits:

Commencing at a point at the intersection of the Perimeter Highway and the western limit of the City of Winnipeg; thence northerly, westerly and northerly along said western limit to the intersection of the straight line production southwesterly of Bishop Grandin Boulevard; thence northeasterly along said straight line production and Bishop Grandin Boulevard to the intersection of Pembina Highway; thence southerly along Pembina Highway to the intersection of Bison Drive; thence westerly along Bison Drive to the intersection of Waverley Street; thence southerly along Waverley Street to the intersection of the straight line production northerly of Shahi Street; thence southerly along said straight line production northerly and Shahi Street and its straight line production southerly to the intersection of the Perimeter Highway; thence westerly along the Perimeter Highway to the point of commencement.

### **Wolseley Electoral Division**

All that portion of the City of Winnipeg contained within the following described limits:

Commencing at a point at the intersection of the La Riviere Subdivision of the Canadian Pacific Railway and the centre thread of the Assiniboine River; thence northerly along said La Riviere Subdivision to the intersection of Portage Avenue; thence easterly along Portage Avenue to the intersection of Erin Street; thence northerly along Erin Street to the intersection of Sargent Avenue; thence easterly along Sargent Avenue to the intersection of Maryland Street; thence southerly along Maryland Street to the intersection of Broadway; thence easterly along Broadway to the intersection of Osborne Street North; thence southerly along Osborne Street North to the intersection of the centre thread of the Assiniboine River; thence in a general westerly direction along said centre thread to the point of commencement.