

RGE 14W1 RGE 13W1 RGE 12W1 RGE 11W1 RGE 10W1 RGE 9W1 RGE 8W1 RGE 7W1 RGE 6W1 RGE 5W1 RGE 4W1 RGE 3W1 RGE 2W1 RGE 1W1 RGE 1E1 RGE 2E1 RGE 3E1 RGE 4E1 RGE 5E1 RGE 6E1 RGE 7E1

TWP 15
TWP 14
TWP 13
TWP 12
TWP 11
TWP 10
TWP 9
TWP 8
TWP 7
TWP 6
TWP 5
TWP 4
TWP 3

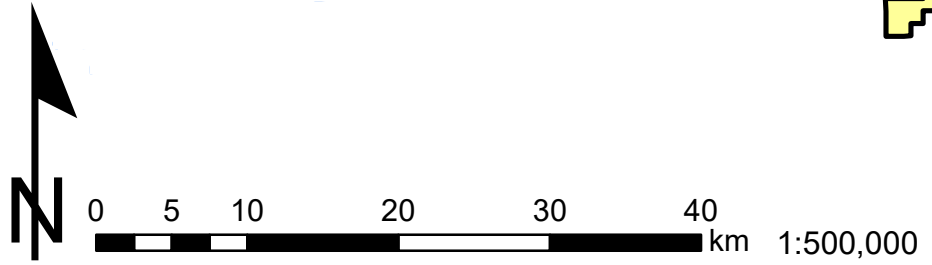
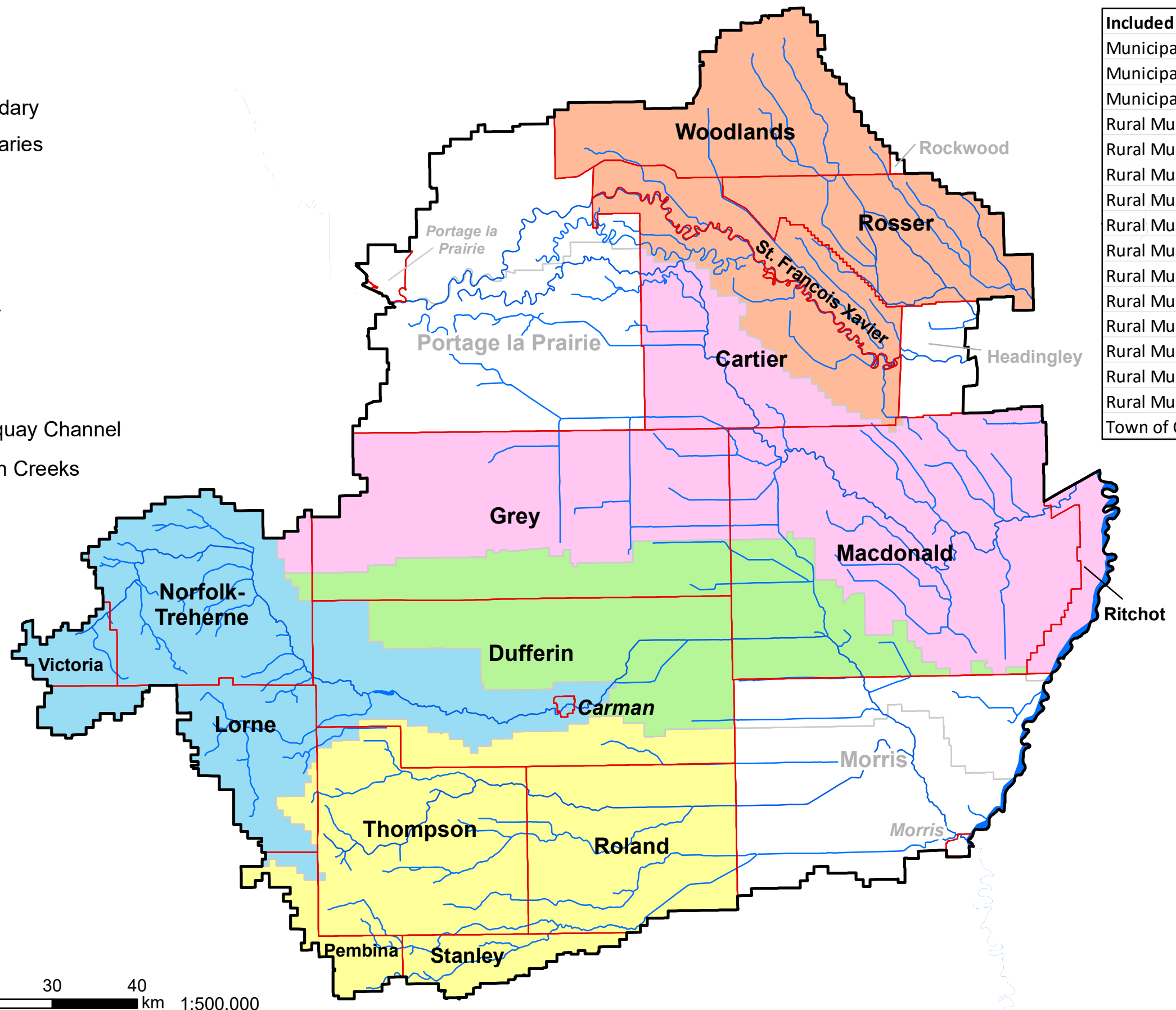
Legend

- Watershed Boundary
- Municipal Boundaries
- Waterbodies
- Watercourses

Subdistricts

- Assiniboine River
- Boyne River
- La Salle River
- Morris River-Norquay Channel
- Tobacco-Shannon Creeks

- #### Included Municipalities
- Municipality of Lorne
 - Municipality of Norfolk-Treherne
 - Municipality of Pembina
 - Rural Municipality of Cartier
 - Rural Municipality of Dufferin
 - Rural Municipality of Grey
 - Rural Municipality of Macdonald
 - Rural Municipality of Ritchot
 - Rural Municipality of Roland
 - Rural Municipality of Rosser
 - Rural Municipality of St. Francois Xavier
 - Rural Municipality of Stanley
 - Rural Municipality of Thompson
 - Rural Municipality of Victoria
 - Rural Municipality of Woodlands
 - Town of Carman



REDBOINE WATERSHED DISTRICT